

Spring 2026



Tractor Times



KOMATSU

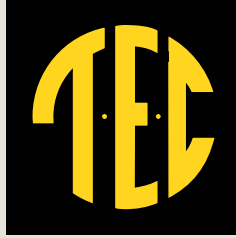
SMARTCONSTRUCTION

Intelligent machine control | **3.0**



Chad Stracener

Preview new solutions



Dear valued customer,

North America's largest construction trade show — CONEXPO-CON/AGG — recently took place in Las Vegas, where more than 2,000 exhibitors showcased the newest equipment and technology across every major construction segment. At this triennial event, Komatsu launched and previewed a broad lineup of machines, engines and digital solutions designed to improve productivity, automation and jobsite connectivity. Check out the recap in this issue to learn about CONEXPO-CON/AGG as well as Komatsu's featured products.

I'd encourage you to read the WIRTGEN GROUP article, which outlines new products, technologies and automation advancements presented at CONEXPO-CON/AGG. Also featured is an article on the WIRTGEN W 210 XF, which provides a great overview of the features and production advantages of this milling machine. Please contact us if we can provide additional details on any of these products.

We're also highlighting SENNEBOGEN's presence at CONEXPO-CON/AGG, showcasing new models with added efficiency and technology. SENNEBOGEN provides market-leading solutions for industries such as scrap, recycling, waste, material handling, ports, mills and tree care. Our team is prepared to respond to any additional information you need on these products.

We offer an insight into Komatsu's recently introduced PC365LC-11 multifunction plus excavator as well. The machine helps contractors complete jobs faster while significantly reducing fuel consumption and operating costs.

If you are searching for an end-to-end solution that simplifies everything from identifying the right component to tracking delivery, look no further than My Komatsu Parts 360. The latest enhancements to Komatsu's comprehensive online portal make fleet management and parts ordering easier than ever.

As always, if there is anything we can do for you, please feel free to call or stop by one of our 20 locations.

Sincerely,

Chad Stracener
Chairman/CEO



In this issue

50 years of success pg. 4

See how Woodward Construction & Design Inc. specializes in horizontal construction with the help of Komatsu intelligent machine control (IMC) equipment.

Next-generation jobsites at CONEXPO-CON/AGG pg. 8

Get a recap of CONEXPO-CON/AGG 2026, North America's largest construction trade show.

Proud to provide pg. 12

Discover how C.A. Langford Company Inc. supplies north Alabama with stone, service and dependable delivery.

Engineered for multifunction applications pg. 17

Check out the Komatsu PC365LC-11 multifunction plus excavator.

The future of smart roadbuilding pg. 20

View some of the machines the WIRTGEN GROUP displayed at CONEXPO-CON/AGG 2026.

Wide spectrum of tasks with versatile mill pg. 22

Take a look at the WIRTGEN W 210 XF large milling machine.

Demo Days pg. 24

Explore Komatsu's Fall Demo Days 2025, which showcased more than 40 pieces of equipment and technology solutions at Komatsu's Cartersville Customer Center in Georgia.

Showstopping solutions pg. 28

Read about the SENNEBOGEN equipment showcased at CONEXPO-CON/AGG 2026.

My Komatsu Parts 360 pg. 31

Delve into My Komatsu's newest enhancements.



TEC1943.com

Birmingham, AL
(205) 591-2131

Tuscaloosa, AL
(205) 752-0621
(800) 582-4625

Anniston, AL
(256) 831-2440

Alabaster, AL
(205) 621-2489

Dothan, AL
(334) 678-1832

Huntsville, AL
(256) 851-2222

Montgomery, AL
(334) 288-6580
(800) 832-9563

Decatur, AL
(256) 355-0305

Mobile, AL
(251) 457-8991
(800) 233-7213

Panama City, FL
(850) 763-4654
(800) 342-2055

Pensacola, FL
(850) 505-0550

Forest Park, GA (Atlanta)
(404) 366-0693
(800) 488-0693

Calhoun, GA
(706) 879-6200
(800) 827-3072

Macon, GA
(478) 745-6891
(800) 786-3120

Columbus, GA
(706) 562-1801

Hoschton, GA
(706) 654-9850
(888) 334-9850

Kennesaw, GA
(678) 354-5533

Augusta, GA
(706) 798-7777
(800) 659-3090

Savannah, GA
(912) 330-7500
(800) 827-1405

Albany, GA
(229) 435-0982
(800) 733-0982

*Published for TEC.
© 2026 CPI.
Printed in the USA.*

The Products Plus The People To Serve You

Tractor & Equipment Company

Chad Stracener, Chairman/CEO

DeVaughn Pettit, President

Jeremy Tolbert, Executive V.P./General Manager – Product Support

Joe Patton, Senior V.P./General Manager – AL

Jamie Steele, Senior V.P./CFO

Autrey McMillan, V.P./Regional Sales Manager – South AL & FL

Shay Holliday, V.P./Regional Sales Manager – North AL

Bill Murphree, Regional Sales Manager – South GA

Andrew Pettit, V.P./Regional Sales Manager – GA

Brian Holder, V.P./Regional Sales Manager – GA

Greg Madaris, V.P./Sales Administration

Mike Burkes, V.P./Service – AL & FL

Russ Lane, General Service Manager – GA

Chris Kohlenberg, V.P./Parts Operations

Greg Carroll, V.P./Sales-Major Accounts – GA

Travis Howell, V.P./Wirtgen Group Products

Chris Lucas, V.P./Information Technology

Copeland Bush, Director of Product Support – AL & FL

Hunter Carroll, Director of Product Support – GA

Jake Osborn, Director of Product Support-Major Accounts – AL

Jim Hensley, Director of Product Support-Major Accounts – GA

Ben Osborn, Director of Superior Products

Brad Hubbard, Manager of Used Parts

Cody Schultz, Used Equipment Manager

John Pierce, New Equipment Rental Manager

Alabama

Birmingham

Bert Suttle, Service Manager

Tim Woods, Parts Manager

Tuscaloosa

Jody Thomason, V.P./Branch Manager

Keith Watkins, Service Manager

Matt Tolbert, Parts Manager

Anniston

Alan Preston, Branch Manager

Nick Kay, Service Manager

Buck Brown, Parts Manager

Decatur

Zach Thomas, Branch Manager

T.J. Smith, Service Manager

Shawn Pewitt, Parts Manager

Huntsville

Daniel Kent, Service Manager

Jann Patterson, Parts Manager

Dothan

Chuck Tibbets, V.P./Branch Manager

Christopher Simer, Service Manager

Drew Bronson, Parts Manager

Alabaster

Randy Hawkins, Branch Manager

Hunter Powell, Parts Manager

Montgomery

Andy Huggins, Branch Manager

Steven Blake, Service Manager

Blake Bishop, Parts Manager

Mobile

Chris Howard, V.P./Branch Manager

Ervind Schjott, Service Manager

Tyler Blackwell, Parts Manager

Renew Center

Gerald Blakey, Service Manager

Florida

Panama City

Chuck Tibbets, V.P./Branch Manager

Adam Sheppard, Service Manager

Jake Toxey, Parts Manager

Pensacola

Kenneth Smith, Branch Manager

Curt Ernest, Service Manager

Chris Smith, Parts Manager

Georgia

Forest Park (Atlanta)

Kenneth Middlebrooks,

Service Manager

Joe Bechtel, Parts Manager

Calhoun

Charlie Pettit, Branch Manager

Alan Rainwater, Service Manager

Paul Johnson, Parts Manager

Macon

Kyle McMahon, Branch Manager

Jason Witcher, Service Manager

Christian Thompson, Parts Manager

Columbus

Jon Lake, Branch Manager

Joshua Prater, Service Manager

Jake Mapp, Parts Manager

Hoschton

Frank Garcia, Service Manager

Allen Brown, Parts Manager

Kennesaw

Jason Smith, V.P./Branch Manager

Nash Barney, Service Manager

Adam Keane, Parts Manager

Augusta

Keith Smith, Service Manager

John Owens, Parts Manager

Savannah

Frank Dabbs, Branch Manager

Jason Dowd, Service Manager

Josh Shoults, Parts Manager

Albany

Scott Burson, Branch Manager

Ben Davis, Service Manager

Drew Ishoy, Parts Manager



50 years of success

Woodward Construction & Design Inc. shifts operations toward horizontal construction with the help of Komatsu IMC equipment



Barclay Woodward,
President

In Hartselle, Ala., Woodward Construction & Design Inc. has built a multigeneration business tackling a diverse range of projects throughout the region. From residential subdivisions to industrial pads and utility infrastructure, this family-owned company has built its reputation by doing the job right and standing behind every project.

"My dad, Ronnie, started the company in 1976 after coming out of the military," recalled President Barclay Woodward. "He got his start in concrete forming and homebuilding, then moved into commercial projects. He always handled his own sitework, and that really opened the door to expansion and paved the way to where we are now."

Growing up around construction, Woodward knew he wanted to join the family business, but it wasn't the buildings that drew him in; it was the dirt.

"Being able to see what you've created and see the growth in your community and other communities is what continues to drive me."

*- Barclay Woodward,
President,
Woodward Construction & Design Inc.*

"What I loved was turning a blank piece of land into something that mattered," Woodward shared. "Being able to see what you've created and see the growth in your community and other communities is what continues to drive me."

Today, Woodward Construction & Design focuses on horizontal construction, which comprises 70% of its work. That includes mass excavation, grading, utility installation and full-site packages. While the business still takes on some vertical construction projects, such as banks, schools and athletic facilities, most of its work supports the steady growth of North Alabama's residential and industrial sectors.

"We handle most jobs from start to finish," stated Woodward. "Clearing, grading, utilities, final prep — it's all done in-house. That gives us better control over budget, scheduling and the quality of work."

Despite running with just 15 employees, Woodward Construction & Design covers a wide area, working within a 60-mile radius of Hartselle and reaching into counties like Madison, Limestone and Morgan.

"One of the biggest things behind our success is the employees," emphasized Woodward. "We breed a culture where everybody is behind the same idea and pushes the projects. They're proud of what they leave each day."

With local housing demand and industrial development on the rise, Woodward Construction & Design's workload has grown dramatically.

"We were doing maybe 100 to 125 lots just for local developers to whereas now we're delivering somewhere between 250 and 400 single-family or townhome lots a year for a roster of clients,"

Customer snapshot

Company: Woodward Construction & Design Inc.

Location: Hartselle, Alabama

Established: 1976

Employees: 15

Area of expertise: Horizontal construction, including mass excavation, grading, utility installation and full-site development

Komatsu equipment: D51PXi-24 and D61PXi-24 IMC dozers; PC138USLC-11 excavator; PC290LCi-11 IMC excavator

Komatsu technology: Intelligent machine control (IMC)

An operator cuts material to grade with a Komatsu D61PXi-24 intelligent machine control (IMC) dozer.

▶ VIDEO





Removing asphalt and concrete curbing is no problem for midsize excavators like the Komatsu PC290LCi-11 IMC model.

described Woodward. "North Alabama just doesn't stop growing."

All in on IMC

As the workload increased, so did the need for greater efficiency. That's when Woodward took a leap he'd resisted for years: investing in Komatsu intelligent machine control (IMC) equipment that features factory-integrated GPS technology for precision grading and excavation.

"I was one of the last holdouts when it came to GPS equipment," Woodward admitted. "I grew up earning seat time the hard way, and I worried this tech would take away from the skills people have spent time developing, but it doesn't. It makes us more efficient and helps mold younger operators who are learning and growing. We are probably moving three times the dirt in a week's time than we were previously."

Woodward Construction & Design's equipment fleet currently includes a Komatsu D51PXi-24 IMC dozer, two Komatsu D61PXi-24 IMC dozers, and a Komatsu PC290LCi-11 IMC excavator.

"The first time we put the PC290LCi to work, we relocated nearly 1,800 feet of streambed in five days," Woodward reported. "One of our newer operators who had minimal experience

in an excavator handled the whole job, and it was within an inch the whole way. That machine replaced what would've taken three or four others and double the amount of time."

The dozers — especially the D61PXi-24 — have been just as impactful, particularly when it comes to detailed finish grading and subdivision development. Woodward noted that the machine's hydrostatic transmission and integrated intelligence allow his crew to take on complex grade work with confidence and speed.

"With the IMC dozers, our guys can cut those grades precisely without staking or second-guessing."

*- Barclay Woodward,
President,*

Woodward Construction & Design Inc.

"In subdivision work, you're dealing with tight lots, swales and fine details that can throw off your whole flow if you're not accurate," explained Woodward. "With the IMC dozers, our guys can cut those grades precisely without staking or second-guessing. It's made final grading faster and more consistent."



Discover more at
TECTractorTimes.com

Continued...

'We pride ourselves on providing quality in a very timely manner'

... continued

Support beyond the sale

Much of Woodward's confidence in the IMC technology comes from his relationship with Tractor & Equipment Company, specifically Branch Manager Zach Thomas and Technology Solutions Expert (TSE) Collin Bussman.

By the numbers

- **70%** of projects are horizontal construction, and **30%** are vertical construction
- **60-mile** working radius around Hartselle, Alabama
- **250 to 400** single-family or townhome lots are currently being developed per year
- **5 years/4,000** hours extended warranty coverage for the dozers through Komatsu Care
- **5 years/3,000** hours extended warranty coverage for the excavator through Komatsu Care



(L-R) Barclay Woodward relies on sales and service support from TEC Branch Manager Zach Thomas.

An operator uses the Komatsu D51PXi-24 IMC dozer to place material and reach final grade.



"Zach and I have a very straightforward way of doing business," said Woodward. "No sales games, no back and forth. If I need something, he finds a way to make it work, whether that's on price, timing or follow-through."

Woodward continued, "Collin has been invaluable. He'll stop by the site on a Saturday just to check in. If he sees something an operator can do better, he offers a tip. If we need a calibration or a quick fix, he's there with his laptop out, making it happen. He's been a huge help to our operators and makes sure they understand the system and how to adapt, whether they're running a curb line or swales and want to change directions. He's always there to help."

For streamlined maintenance, all of Woodward Construction & Design's IMC machines are supported by Komatsu Care and protected under extended warranties — five years or up to 4,000 hours for the dozers and five years or up to 3,000 hours for the excavator.

"Between the warranty, the service and the financing, TEC has made it easy for us to modernize the fleet and continue to partner with them."

*- Barclay Woodward,
President,
Woodward Construction & Design Inc.*

"Having that level of coverage and maintenance is a huge selling point," commented Woodward. "Between the warranty, the service and the financing, TEC has made it easy for us to modernize the fleet and continue to partner with them."

Continued growth

Those upgrades are helping Woodward Construction & Design position itself for sustainable growth. It is actively bidding more commercial work to complement its site development side and is expanding its utility division. At the heart of it all is a commitment to the work ethic instilled by Woodward's father 50 years ago.

"We pride ourselves on providing quality in a very timely manner and forming long-lasting relationships with our clients," Woodward concluded. "As the second generation, it means the world to me to carry this business forward and see it continue to grow." ■

**The opinions expressed here are based on the customer's specific experience. Results may vary.*



Intelligent machine control | 3.0

SMART CONSTRUCTION

Intelligent machine control (IMC) technology improves construction efficiency by reducing manual staking, surveying, and final inspection. By using 3D design data, operators can accurately work from rough excavation to finish grade while minimizing over-excavation. Komatsu's sensor package—including stroke-sensing cylinders, an IMU sensor, and GNSS antennas—monitors machine position in real time.



TEC1943.COM

Next-generation jobsites at CONEXPO-CON/AGG

Technology and automation led the conversations as 140,000-plus attendees met at North America's largest construction trade show

The global construction industry gathered in force in Las Vegas as CONEXPO-CON/AGG 2026 brought more than 140,000 professionals from 128 countries together to explore the technologies, equipment and ideas shaping the future. Held at the Las Vegas Convention Center and nearby festival grounds, the triennial event once again served as North America's largest construction trade show and a central marketplace for a \$2.2 trillion U.S. industry.

Spanning more than 3 million square feet of exhibit space and featuring more than 2,000 exhibitors, the event showcased equipment, digital technologies and services across every major construction segment. Massive earthmoving machines, cranes and paving systems stood alongside connected jobsite platforms, automation solutions and sustainability-focused innovations. Contractors, manufacturers and technology leaders gathered to evaluate equipment, forge partnerships, and conduct business that will influence projects and infrastructure development going forward.

"CONEXPO-CON/AGG is where the construction industry comes to see what's next," said CONEXPO-CON/AGG Show Director Dana Wuesthoff. "This week demonstrated the resilience and ingenuity of our industry.

From advanced machinery to digital tools that help crews work safer and smarter, the innovations unveiled here will shape jobsites for years to come."

Komatsu showcases solutions

Komatsu launched and previewed a broad lineup of machines, engines and digital solutions designed to improve productivity, automation and jobsite connectivity.

"CONEXPO-CON/AGG is where the construction industry comes to see what's next."

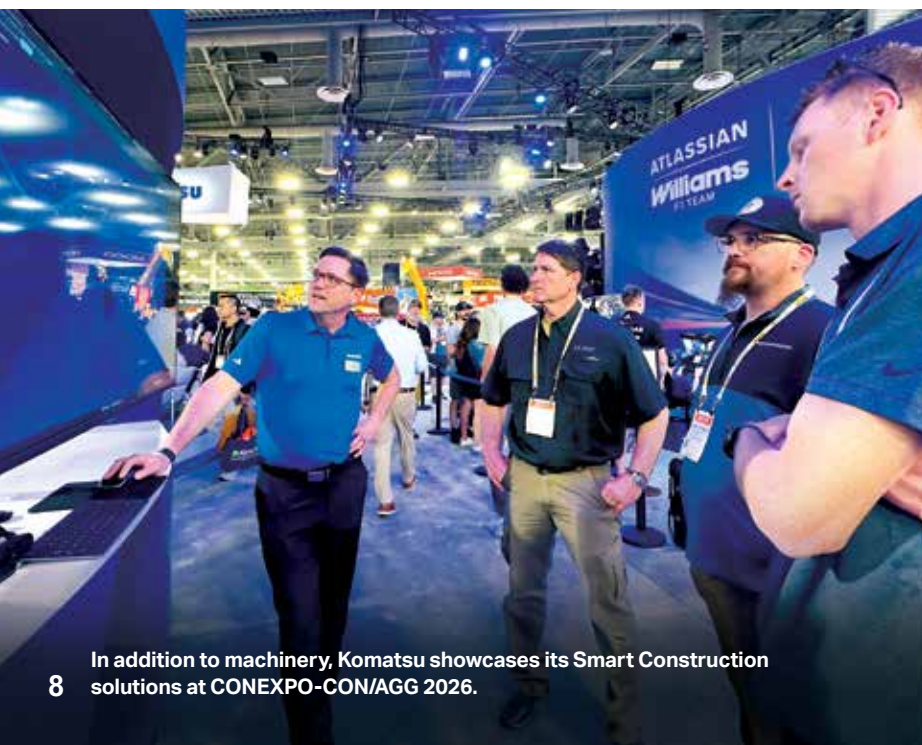
*- Dana Wuesthoff,
Show Director,
CONEXPO-CON/AGG*

"At CONEXPO, our goal is to give customers a clear sense of where Komatsu is headed — showcasing new machines, next-generation technology, and integrated solutions that will drive productivity, simplify maintenance, and shape the future of their operations," stated Paul Moore, Vice President of Products, Marketing and Service for Komatsu North America.

Among the machines featured was the new HM460-6 articulated truck with an increased payload capacity of 46.3 tons and an overall machine weight that has been reduced by roughly 6,600 pounds compared to the HM400-5. Combined with a new nine-speed transmission, locking axles and traction control systems, the truck is designed to shorten haul cycles while lowering fuel consumption.

"We increased production, reduced the weight of the truck, and added a new engine and transmission. It all works together as a system to deliver faster cycle times and higher productivity," explained Bruce Boebel, Director of Products and Services for Komatsu's construction division, noting that the HM460-6 is powered by Komatsu's new DBA127 engine, a 12.7-liter powerplant designed to simplify emissions systems while extending service intervals, including a diesel particulate filter exchange interval of up to 8,000 hours.

Komatsu highlighted the first in its -12 series excavator platform, the PC220LC-12, which features a wider cab, customizable electro-hydraulic controls and advanced



In addition to machinery, Komatsu showcases its Smart Construction solutions at CONEXPO-CON/AGG 2026.



► VIDEO

Attendees check out a wide variety of the latest equipment, including Komatsu's new PC220LCi-12 excavator with intelligent machine control (IMC) 3.0 technology.

operator interfaces. The PC220LCi-12 intelligent machine control (IMC) model integrates new automation tools in IMC 3.0, such as swing-to-line and travel-along-line, enabling operators to maintain trench alignment and automatically reduce repetitive manual adjustments.

Komatsu also showcased its recently launched PC365LC-11 multifunction plus excavator with an electric swing system that captures and reuses energy generated during swing braking. The system stores recovered power and redistributes it during operation, improving cycle times and fuel efficiency during demanding tasks such as truck loading and trenching.

Additional currently available machines on display included WA485-11, WA475-11, WA380-8 and WA700-8 wheel loaders, each built to deliver dependable performance and efficiency across various applications. The WA485-11, WA475-11 and WA380-8 work well in construction and quarry applications, while the larger-capacity WA700-8 is built for surface mining.

Komatsu also gave attendees a preview of machines set to launch in the near future, including a PC158USLCi-12 excavator equipped

with the latest IMC 3.0 system. The 15-ton class excavator will be the first tight-tail model in its size category to offer factory-installed IMC, bringing advanced automation features to utility, highway and urban construction work where compact machines are common.

Komatsu offered show attendees an exclusive preview of two next-generation crawler dozers engineered to advance productivity and efficiency in earthmoving applications from site development and road construction to mining. The D61PXi-25 dozer with IMC 3.0 and the D175AX-10 large production dozer represent the next phase in Komatsu's evolution of powertrain performance, operator-centered design and integrated technology.

Alongside its machines, Komatsu emphasized digital jobsite solutions under its Smart Construction ecosystem. New tools demonstrated at the show included:

- **Smart Construction Dashboard Mobile** — a smartphone-based version of its jobsite visualization platform
- **Smart Construction Edge** — a base station for on-site drone data processing
- **Smart Construction Fleet Lite** — basic payload tracking



Watch the video

Smart Construction highlighted at CONEXPO-CON/AGG

... continued

- **Smart Construction Home** — a homepage for projects, displaying jobsites on a map with key metrics such as job completion percentage
- **Smart Construction Whiteboard** — a digital dispatch tool modeled after traditional office whiteboards that allows users to drag and drop machines and labor onto jobsite columns
- **3D Machine Guidance Flex** — a GPS-based guidance system designed for a wider range of machines including trucks, loaders and scrapers

“Smart Construction is about more than just building better machines — it’s about connecting those machines with people and processes to optimize the entire jobsite.”

*- Jason Anetsberger,
Director of Customer Solutions,
Komatsu*

“Smart Construction is about more than just building better machines — it’s about connecting those machines with people and processes to optimize the entire jobsite,” noted Jason Anetsberger, Director of Customer Solutions, Komatsu. “By combining intelligent equipment with digital planning and 3D control, we help customers eliminate waste, reduce idle time, and ultimately get the most efficiency and productivity out of every move they make.”

Additionally, Komatsu spotlighted its new Smart Quarry Autonomous solution, which uses artificial intelligence, onboard computing and sensor-based perception technologies to navigate mapped haul routes with minimal setup. System configurations are determined based on site requirements and applicable commercial agreements.

Plus, Komatsu featured fleet connectivity through its My Komatsu digital platform, which integrates telematics, parts purchasing, fleet data and predictive maintenance tools into a unified portal designed to help contractors manage equipment and jobsite performance more effectively.

Other highlights included machine and racing simulators that attendees could operate, a replica of the Atlassian Williams Racing Formula 1 car that Komatsu sponsors and partners with, and a company store with Komatsu-branded apparel and accessories.

“We want every visitor to leave our booth excited — not just about the equipment they see today, but about the innovation, digital transformation and long-term partnership Komatsu is building to support their success moving forward.”

*- Paul Moore,
Vice President of Products,
Marketing and Service,
Komatsu*

“We want every visitor to leave our booth excited — not just about the equipment they see today, but about the innovation, digital transformation and long-term partnership Komatsu is building to support their success moving forward,” commented Moore.

Honoring those who build

One of the CONEXPO-CON/AGG’s most visible moments came during the opening ceremony, when thousands of attendees donned bright orange safety vests for a Guinness World Record attempt for the largest gathering of people wearing high-visibility construction vests. Organizers aimed to surpass the previous record of 2,499 participants, using the moment to emphasize the construction industry’s commitment to safety and its collective impact on infrastructure, transportation networks, energy development, sports venues and civic landmarks across North America.



Attendees have a great time running simulators designed to give an operator’s view from the cab of a machine.



At CONEXPO-CON/AGG 2026, Komatsu introduces its new DBA 127 engine, which powers the new Komatsu HM460-6 articulated truck and will power additional soon-to-be launched machines.

"This record attempt is more than a number — it's a celebration of the advances, hard work, innovation and dedication of everyone in the construction industry," Wuesthoff said. "We want to honor those who build our cities, roads, railways, airports, stadiums and monuments, and highlight how their efforts touch every aspect of society. This record is particularly important to us as safety is and always will be of utmost priority for the industry and the people who make this work possible."

CONEXPO-CON/AGG also served as a forum for thought leadership through 150 educational sessions. On the show's Ground Breakers Stage, experts discussed emerging topics including artificial intelligence in construction, workforce development and infrastructure investment. Workshops focused on small business growth, equipment maintenance and mentorship opportunities for women in construction, reinforcing the industry's emphasis on workforce development.

The scale and influence of CONEXPO-CON/AGG reflect more than a century of industry evolution. The show traces its roots back to 1909, when the original Road Show in Columbus, Ohio, featured just 40 equipment

manufacturers across 40,000 square feet. Today, the event has grown into a global platform for innovation, connecting thousands of companies and professionals shaping the future of the built environment.

"This event continues to elevate the equipment manufacturing industry — amplifying innovation, insight and influence."

*- Dana Wuesthoff,
Show Director,
CONEXPO-CON/AGG*

"A century of progress is reflected in CONEXPO-CON/AGG's scale, scope and spirit," Wuesthoff stated. "This event continues to elevate the equipment manufacturing industry — amplifying innovation, insight and influence."

As the 2026 show concluded, organizers emphasized that the relationships formed, deals negotiated and technologies introduced during the week will ripple across construction projects worldwide for many years to come. The next edition of CONEXPO-CON/AGG is scheduled to return to Las Vegas March 13-17, 2029. ■

Proud to provide

C.A. Langford Company Inc. supplies north Alabama with stone, service and dependable delivery



Scott Langford,
President

CA. Langford Company Inc. has spent 70 years building a reputation as a steady limestone producer in north Alabama. Founded in 1956, the family business has stayed rooted in Guntersville, Ala., while expanding its product mix and delivery capabilities through C.A. Langford Company and its trucking firm, Charmack Hauling.

"This is our 70th year in business, and that means a lot to us because this area has been good to our family for a long time," reflected President Scott Langford. "My grandfather had quarries in Tennessee, and as county quarries started opening there, he moved south and came to this spot. We leased this property originally, and we're still leasing it from the same family. We try to stay humble in what we do and just deliver a good product."

Today, C.A. Langford Company serves a roughly 60-mile radius from Guntersville, reaching markets such as Huntsville, Cullman and Gadsden, while staying focused on supplying material rather than moving into paving or site contracting. A service mindset has helped the company keep strong local relationships while handling everything from residential driveway loads to larger commercial work.

"We take pride in providing limestone to individuals, and that's one reason we have our sister company, Charmack Hauling," Scott stated. "We still do a lot of big projects, but we also want to be easier to talk to and deal with for our smaller customers. When people call to get rock, they don't always understand the difference in crusher run and washed rock. We try to help them get the best product they need and get it there in a timely manner."

There are about 30 employees between C.A. Langford Company and Charmack Hauling, and Scott noted that longevity matters as much as head count, because experienced employees bring continuity to production, customer service and day-to-day decision-making.

"The pride in someone coming to work here 35 or 40 years and being able to put their kids through college — that shows success that's hard to see on a profit-and-loss statement," Scott remarked.

General Manager Chris Jones sees that consistency in the pace of the operation. He has spent decades helping manage production and maintenance, and he said C.A. Langford Company's staying power comes from a willingness to respond when customers call, even when the timing is difficult.

"The relationship with customers is what has allowed this company to be around for 70 years," Chris emphasized. "We do whatever it takes. I've spent many Saturday evenings and Sundays out there loading trucks, helping spread rock or helping on a jobsite, because when somebody needs something, we take care of it."

Right equipment

Equipment is central to C.A. Langford Company's customer-first approach. Over the years, the business has built a fleet around Komatsu machines, including recent additions like WA485 and WA480 wheel loaders, PC490LC-11 and

Customer snapshot

Companies: C.A. Langford Company Inc. and Charmack Hauling

Location: Guntersville, Alabama

Employees: About 30 between both companies

Established: 1956

Areas of expertise: Limestone and aggregate production; hauling and delivery for contractors and residential customers

Komatsu equipment: WA485 and WA480 wheel loaders; PC490LC-11 and PC360LC-11 excavators; HM400 articulated truck; HD405 mechanical truck

Additional equipment from TEC: Tramac rock breaker; KLEEMANN MOBISCREEN MSS 802i EVO mobile screening plant; Superior P300 Patriot cone crusher

The Superior P300 Patriot cone crusher offers better washed rock production, improved cubicity and less dust than C.A. Langford Company's previous machine.





An operator uses a Komatsu PC490LC-11 excavator to load a crusher with limestone.

PC360LC-11 excavators, an HM400 articulated truck and an HD405 mechanical truck.

"When we first started buying Komatsu equipment, we were a loader-dominant company," Scott explained. "You could be in the pit loading rock, load trucks in the yard, go make dense grade, whatever you needed to do with a loader. Then, as we started stripping and our floors got uneven, we got into loading with excavators. Since then, we've bought several PC490LC excavators to load trucks with, and that's been a good size for us."

C.A. Langford Company's new WA485 recently replaced a two-pass Komatsu WA500 wheel loader, which had just reached over 23,000 hours.

"The WA500 was great for us, but the WA485 has a smaller footprint, uses a little less fuel and seems to keep us just as efficient," noted Scott. "Your tire expense isn't the same, and the new hydraulics make it smoother and faster."

One of the biggest changes in C.A. Langford Company's operation came from rethinking how oversized rock was handled. Instead of throwing away boulders, C.A. Langford Company added a Tramac rock breaker and made it part of the everyday process, improving material recovery and reducing waste.

The quarry has also expanded its flexibility through mobile processing equipment.

"We've had several KLEEMANN machines, and they've been great for us," shared Scott. "I'm not afraid to go do repairs on our older, stationary

equipment to really fix them while the KLEEMANN machines maintain our production."

Another major step came with the addition of the Superior P300 Patriot cone crusher. C.A. Langford Company wanted better washed rock production, improved cubicity and less dust than it had been getting from its older impact-crushing setup.

"The cubicity in the rock is good, and I'm probably making 7% or 8% less dust than I was before, which means more rock where we need it," Scott reported. "With the old impact crusher, you were constantly flipping hammers, changing liners and trying to keep an edge. Now, every morning we're setting our gap, and if we need a different product, the hydraulics let us adjust it quickly."

Chris added, "This Superior has really upped our production. It runs, and we really haven't had any issues with it other than little things you expect in a rock environment. When you can run 10 more hours in a week because you're not changing liners and hammers all the time, that turns into thousands of extra tons."

Technology and machine design also affect the operator experience, which matters in a quarry that depends on long days and reliable performance. Colin Langford, who represents the fourth generation of Langfords in the family business, has worked across the operation before recently moving into the scale house and sales. Colin believes that time in the seat changed how he understood the business and why the company continues to use Komatsu equipment.



Colin Langford,
Sales and
Customer Service
Representative



Chris Jones,
General Manager



Discover more at
TECTractorTimes.com

Continued...

'They keep us taken care of'

... continued

By the numbers

- 70 years in business
- 4 generations
- 60-mile service area around Guntersville



(L-R) C.A. Langford Company's Chris Jones, Colin Langford and Al Cloud work closely with TEC's Conner Bussman to purchase and support equipment for their operation.



KLEEMANN mobile screens allow C.A. Langford Company to stay productive and flexible around the quarry.

An operator loads a truck with a Komatsu WA485 wheel loader.



"It's reliable, it's consistent, and it's comfortable," commented Colin. "When you spend all day, every day in a machine, little things matter — like having Bluetooth. Operator comfort and consistency really do make a difference over a long day, and our Komatsu equipment gives us that."

Reliable support

C.A. Langford Company's equipment decisions are closely tied to its longstanding relationship with Tractor & Equipment Company.

"Once TEC picked up the Komatsu line in the early '90s and brought that WA500 in, we fell in love with it and TEC's service," Scott recalled. "We've built a relationship with TEC over the years, and when you get through some rebuilds, repairs and expensive fixes, you build trust. We've had things we disagreed on, but we sit down and talk through it."

The relationship also stands out in day-to-day support. Scott values being able to call sales representative Conner Bussman, Service Manager Daniel Kent or PSSR Gary Dodd directly, rather than waiting in a system while production is on the line.

"Conner, Daniel and Gary are easy to get ahold of," Scott stated. "I can call Conner or Gary about what I need, and if I have repairs, I can call Daniel and have the conversations that need to be had. It's personal and doesn't feel corporate."

Chris echoed that view from the maintenance side, saying TEC's responsiveness helps keep the quarry moving.

"Gary is always there whenever I need him," Chris declared. "I've called him at 8 or 9 at night, and he always answers. I talk to Daniel probably 10 times a week. Whether he jumps in the truck or has somebody drop something off, they help us out. Between those guys, they keep us taken care of."

Future

Looking ahead, C.A. Langford Company plans to keep growing and improving without changing the core business of making and delivering stone.

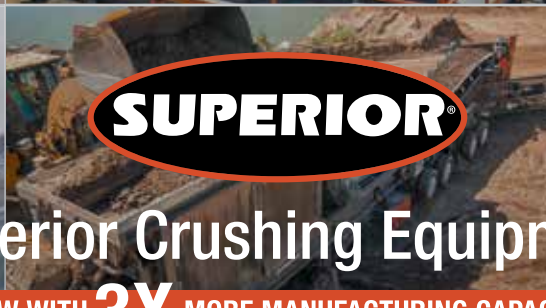
"We're committed to Marshall County, Guntersville and the north Alabama area, and we're always looking at ways to expand," Scott concluded. "I want to stay in the footprint of making products and delivering them. I'm always looking at ways to use the material and resources here if it's something we can make and deliver, and I want this business to keep going for the next generation." ■

**The opinions expressed here are based on the customer's specific experience. Results may vary.*



EVERY CRUSHER YOU NEED

More Models Than You Might Imagine



SUPERIOR

Superior Crushing Equipment

NOW WITH **3X** MORE MANUFACTURING CAPACITY

TEC is Superior's crushing, screening, washing and conveying dealer in Alabama and Georgia.



- ① PC360LC-11 demolition
- ② Fully automatic Lehnhoff SQ quick coupler
- ③ Montabert multiprocessor



Hard to beat. **Easy to transport.**



The Komatsu PC360LC-11 demolition excavator is the ideal straight boom large excavator for tough demolition jobsites. It's also designed with dimensions that make it easier to move from project to project. This excavator is purpose-built with special guarding and other demolition-specific features enabling it to take on unique and challenging worksites. Pair it with a fully automatic Lehnhoff SQ quick coupler system that enables Montabert attachment changes right from the cab, and you have an equipment package that's hard to beat.

Discover more ► komatsu.com/demolition

KOMATSU

© 2025 Komatsu Ltd. or one of its subsidiaries. All rights reserved.



Since 1943

TEC1943.com

ALABAMA

ALABASTER
ANNISTON
BIRMINGHAM
DECATUR
DOTHAN
HUNTSVILLE
MOBILE
MONTGOMERY
TUSCALOOSA

GEORGIA

ALBANY
AUGUSTA
CALHOUN
COLUMBUS
FOREST PARK
HOSCHTON
KENNESAW
MACON
SAVANNAH

FLORIDA

PANAMA CITY
PENSACOLA

Engineered for multifunction applications

Komatsu PC365LC-11's electric swing system delivers more power, faster cycle times and lower fuel consumption to help boost jobsite productivity

Komatsu is bringing a new level of performance and efficiency to large excavators with the introduction of the PC365LC-11 multifunction plus model to the North American market. Built to deliver more power exactly where it's needed, this machine leverages its innovative electric swing system with "boom-up" power assist to deliver up to a 15% increase in productivity and up to a 20% reduction in fuel consumption compared to conventional Komatsu excavators in the same size class. The fully electric swing system, advanced hydraulics and refined operator environment help contractors complete jobs faster while significantly reducing fuel consumption and operating costs.

Designed specifically for demanding multifunction applications, the PC365LC-11 features a refreshed exterior design, an enhanced cab and a suite of standard and optional features optimized for North American construction jobsites.

"The PC365LC-11 was engineered for excellence in multifunction applications by leveraging its innovative electric powertrain system to boost jobsite productivity while reducing fuel consumption compared to conventional Komatsu excavator offerings in this size class."

*- Matthew Moen,
Product Manager,
Komatsu*

"The PC365LC-11 was engineered for excellence in multifunction applications by leveraging its innovative electric powertrain system to boost jobsite productivity while reducing fuel consumption compared to conventional Komatsu excavator offerings in this size class," said Matthew Moen, Product Manager, Komatsu. "To highlight these performance enhancements, we're emphasizing the concept of 'multifunction plus' as the defining feature of this machine."

Enhanced performance and reduced fuel consumption

The PC365LC-11 is the only excavator in its class equipped with a fully electric swing system with "boom-up" power assist. The PC365LC-11's electric swing motor enhances multifunction performance by delivering faster swing acceleration, reducing cycle times and increasing productivity. Unlike conventional hydraulic swing motors, the PC365LC-11's electric swing motor

recovers kinetic energy at the end of each swing and converts it to electricity.

That energy is stored in the Komatsu-designed ultra-capacitor, where it can power the electric swing motor or be directed to the engine-mounted motor-generator. This provides an instantaneous boost of up to 70 additional horsepower to the work equipment by assisting the engine's response from an ultra-low idle speed of 700 RPM. The ultra-low idle state was designed to reduce fuel consumption further — lowering total cost of ownership and minimizing downtime. All electrical energy used by the system is generated during normal machine operation, and there is no need for external charging.

By eliminating the need for hydraulic power for swing operations, full hydraulic flow is now optimally routed to the boom, arm and bucket cylinders — improving digging cycle times, reducing work equipment lag and creating a smoother operation in multifunction applications.

The electric powertrain also contributes to a quieter jobsite. Eliminating hydraulic flow during the swinging motion reduces mechanical noise and vibration, and the ultra-low 700 RPM idle

Continued ...

Quick specs

Model	Horsepower	Operating weight	Bucket capacity
PC365LC-11	269 HP + 70 electric HP	81,791-85,495 lbs.	0.89-2.56 yd ³



Designed for demanding multifunction applications, the Komatsu PC365LC-11 helps contractors to work faster, quieter and more efficiently, all while lowering total cost of ownership.

New features and enhancements

... continued

speed operates significantly quieter than the conventional 1,000 RPM low idle. The external noise reduction of 4 dB(A) helps improve the working environment for the operator, nearby crews and others near the jobsite.

Even in the most demanding multifunction applications, these advancements make the PC365LC-11 up to 15% more productive and reduce fuel consumption by up to 20% when compared to the conventional PC360LC/LCi-11 — a rare combination of higher output and greater efficiency.

Compared to the previous model, the PC365LC-11 brings new features and enhancements across three key areas: operator experience, technology and attachment flexibility:

- **Greater operator comfort for long shifts:** A new standard** premium heated air-suspension operator seat features a high leather back, improved cushioning and multiple adjustments to enhance operator comfort during long working shifts. New standard proportional joysticks provide smooth, variable-speed control of plus one attachments while offering an ergonomic feel, helping reduce operator fatigue and wrist stress.
- **Technology that gets the job done:** The KomVision camera system comes as standard** and provides a real-time bird's-eye view of the machine and its surroundings to help improve situational awareness that supports Komatsu's mission of zero harm. An optional Smart

Construction 3D Machine Guidance kit can be factory-installed, giving operators and managers access to 3D design and topographic data to improve accuracy, manage load volumes and optimize operations.

- **Efficient, fast and versatile attachment operation:** The tool control system is standard for machine configurations with a plus one hydraulic attachment piping. This empowers operators to configure and store flow rates and target pressures for multiple attachments. Attachment information is displayed on the in-cab monitor interface, enabling quick switching between tools with accurate, preconfigured hydraulic settings. Optional hydraulic quick coupler piping can be factory-installed, saving both time and local installation costs. This piping provides the necessary hydraulic flow and pressure to operate hydraulic quick couplers, such as the Lehnhoff fully automatic symmetric quick coupler.

For added peace of mind, the machine's electric powertrain components are covered by a 7-year/15,000-hour transferable warranty. ■

**Statistical claims and comparisons referenced herein are made against conventional Komatsu excavators in the same size class, against the Komatsu PC360LC-11 and PC360LCi-11. New features and enhancements referenced herein from the previous model are compared with those of the Komatsu HB365LC-3.*

***To be introduced as a running change after model release. Please work with your Komatsu representative if this feature is required.*



The Komatsu PC365LC-11 multifunction plus excavator delivers more power where it counts with a fully electric swing system, advanced hydraulics and a refined operator environment.

ESCO®

WEAR

**STDP
Standard-Duty
Plate Lip Bucket**



**SXDP
Super Extreme Duty
Plate Lip Bucket**



Level up with the NEW ESCO® Vertasys™ tooth system

ESCO® buckets are precision engineered and feature the revolutionary Vertasys™ tooth system that provides optimized point profiles for more machine uptime and a unique vertical lock for reduced maintenance time.

Vertasys™ Tooth System



**ESCO® Manganese
Crusher Wear Parts**



**Bucyrus Blades™
Cutting Edges and Accessories**



Alabama

- | | |
|------------|------------|
| ALABASTER | DOTHAN |
| ANNISTON | MOBILE |
| BIRMINGHAM | MONTGOMERY |
| DECATUR | TUSCALOOSA |
| HUNTSVILLE | |

Georgia

- | | |
|-------------|----------|
| ALBANY | HOSCHTON |
| AUGUSTA | KENNESAW |
| CALHOUN | MACON |
| COLUMBUS | SAVANNAH |
| FOREST PARK | |

Florida

- PANAMA CITY PENSACOLA

Since 1943

TEC1943.com

The future of smart roadbuilding

New machines and digital technologies defined WIRTGEN GROUP's massive display at CONEXPO-CON/AGG 2026

The WIRTGEN GROUP delivered one of CONEXPO-CON/AGG's most comprehensive showcases of road construction, earthworks and materials processing technology. The company presented six market premieres and three global firsts while emphasizing the growing role of automation, digital integration and intelligent machine systems across modern construction projects.

The exhibit highlighted how connected technologies were transforming construction workflows by helping contractors improve efficiency, increase transparency and streamline operations from start to finish. Across the booth, numerous machines were equipped with advanced digital solutions designed to automate processes, monitor performance data and assist operators in real time. The presentation reflected the company's broader strategy of combining heavy equipment with smart technologies that simplify complex jobsite tasks and improve productivity.

A major focus of the event was the latest machinery from WIRTGEN, particularly in the areas of cold milling, recycling and soil

stabilization. The company introduced a new generation of wheeled cold recyclers and soil stabilizers intended for a wide range of road rehabilitation and ground preparation applications. These machines featured digital assistance systems designed to improve mixing quality, guide operators through workflows and reduce operating costs. WIRTGEN also revealed a world premiere that introduced an entirely new application area for customers, reinforcing the company's reputation for innovation within the roadbuilding industry.

Paving, compaction and crushing

VÖGELE showcased its latest generation of Dash-5 pavers for the North American market. The new paving machines focused on improved ergonomics, quicker setup times and increased automation for paving crews. Several tracked and wheeled pavers made their debut alongside redesigned screeds intended to improve paving flexibility and overall performance. VÖGELE also highlighted compact paving equipment designed for smaller and more confined jobsites, demonstrating the company's effort to provide solutions for a broad variety of paving applications.

VÖGELE's new paving machines focus on improved ergonomics, quicker setup times and increased automation.





CONEXPO-CON/AGG 2026 attendees take a look at WIRTGEN's wide range of cold milling, recycling and soil stabilization equipment.

HAMM's attention centered on automated compaction technologies. The company demonstrated systems capable of monitoring asphalt density in real time and automatically adjusting compaction settings during operation. These technologies were developed to help contractors achieve more consistent paving quality while minimizing the risks associated with under- or over-compaction. HAMM also introduced equipment for earthworks applications and additional machines aimed at expanding versatility for contractors working across multiple jobsite conditions.

Meanwhile, KLEEMANN focused on productivity and operational efficiency in materials processing. The company presented a new screening plant for quarry and aggregate applications that emphasized ease of use, operator safety and flexible operating modes, including electric-powered operation. KLEEMANN also demonstrated digital connectivity systems that allowed operators to monitor machine performance and material stockpiles directly from mobile devices, helping crews make faster decisions and improve workflow efficiency.

Overall, the WIRTGEN GROUP's presence at CONEXPO-CON/AGG 2026 demonstrated the company's continued push toward smarter, more connected construction equipment.



HAMM showcases its HC 200i VA compactor at CONEXPO-CON/AGG 2026.

By combining advanced machinery with automation and digital management tools, the group showcased how technology was increasingly becoming central to the future of road construction, compaction, recycling and materials processing. ■

Wide spectrum of tasks with versatile mill

WIRTGEN's W 210 XF delivers from surface layer rehabilitation to full-depth removal with power, precision and milling efficiency

WIRTGEN's W 210 XF is engineered for maximum productivity across a wide spectrum of tasks — from surface layer rehabilitation to fine milling and full-depth pavement removal.

Built for major infrastructure projects such as freeways, state highways and airport runways, the W 210 XF combines high daily output with advanced machine intelligence such as WIRTGEN's MILL ASSIST machine control system. It automatically balances performance, fuel efficiency and operating costs. Operators can choose among three strategic modes — cost, performance or quality — while the system continuously optimizes milling parameters for the best results.

Power comes from a 778-horsepower engine with a torque profile that was refined specifically for cold milling demands. Paired with the DUAL SHIFT two-speed powershift transmission, the W 210 XF offers a large range of milling drum speeds. Lower drum speeds reduce fuel consumption, pick wear and noise, while higher speeds maximize output and deliver a superior milling pattern even at depths reaching up to 13 inches. This range ensures the machine can handle the most challenging milling tasks with efficiency and long-term sustainability.

More accurate documentation

Flexibility is another hallmark. Thanks to its single-bolt design that utilizes on-board tools, the W 210 XF's Multiple Cutting System (MCS) enables the milling drum to be exchanged within minutes, allowing crews to quickly switch between drums with different tooth spacings. With the quick-change system, the entire drum housing can be swapped in under an hour to achieve milling widths of 6 feet, 7 inches; 7 feet, 3 inches; and 8 feet, 2 inches.

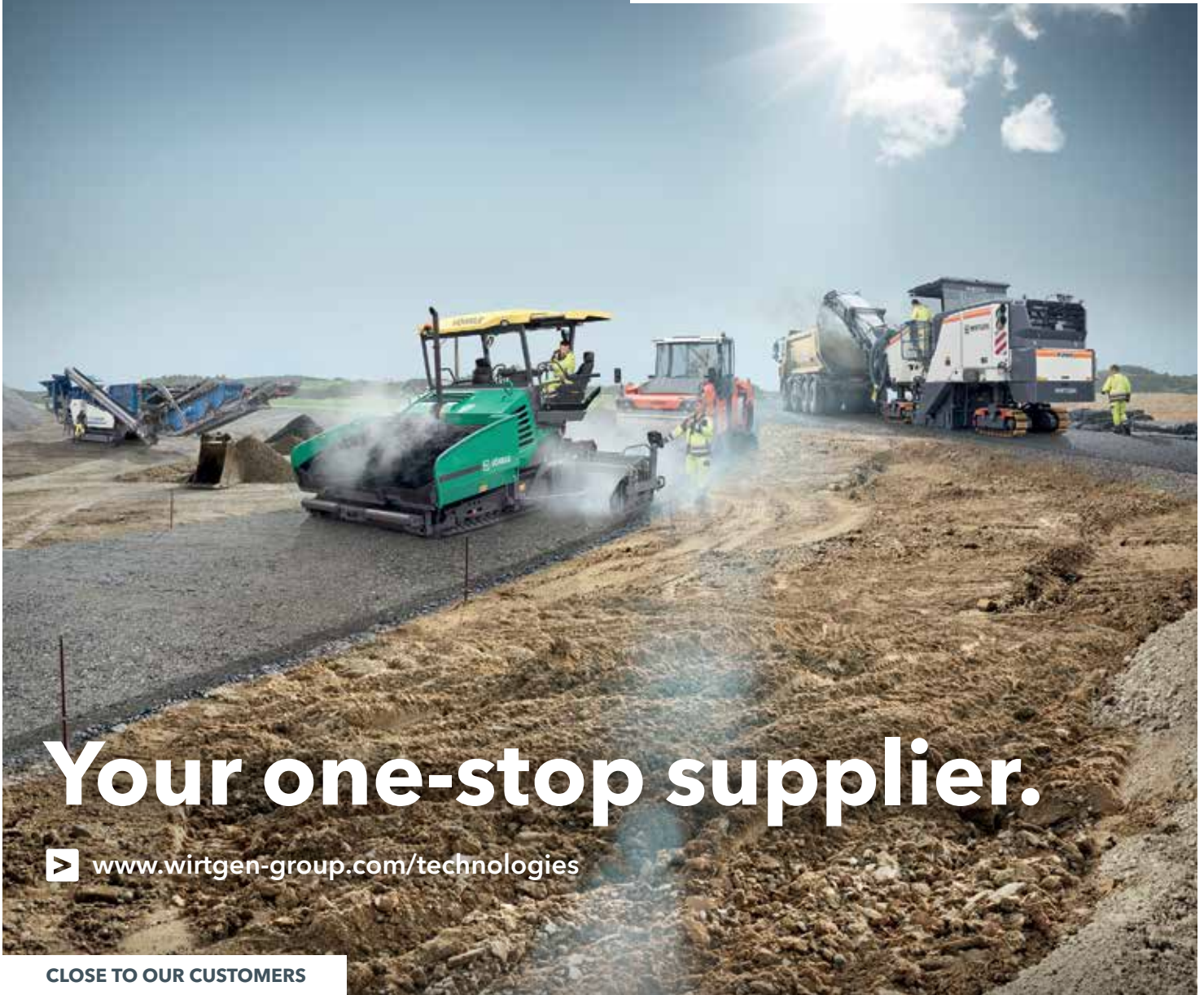
For documentation and jobsite transparency, WIRTGEN's WPT Milling (Wirtgen Group Performance Tracker Milling) records machine and site parameters automatically. Upon completion, data is transmitted to the owner for streamlined billing and analysis. All information appears in real time.

Precision is strengthened by the LEVEL PRO ACTIVE leveling system, which is fully integrated into the machine's controls. The system provides clear sensor feedback, simplifies operator workload and includes automated functions such as lifting over manhole covers, ensuring accurate milling results with minimal manual adjustments. ■


Quick specs			
Model	Horsepower	Operating weight	Milling widths
W 210 XF	778 HP	65,698 lbs.	6 feet, 7 inches to 8 feet, 2 inches



The WIRTGEN W 210 XF large milling machine tackles a full-depth pavement removal job, demonstrating its high-output performance and adaptable milling capabilities.



Your one-stop supplier.

 www.wirtgen-group.com/technologies

CLOSE TO OUR CUSTOMERS

ROAD AND MINERAL TECHNOLOGIES. With leading technologies from the WIRTGEN GROUP, you can handle all jobs in the road construction cycle optimally and economically. Put your trust in the WIRTGEN GROUP team with the strong product brands WIRTGEN, VÖGELE, HAMM, KLEEMANN.

 www.wirtgen-group.com

WIRTGEN



VÖGELE



HAMM



KLEEMANN



Alabama

ALABASTER	DOTHAN
ANNISTON	MOBILE
BIRMINGHAM	MONTGOMERY
DECATUR	TUSCALOOSA
HUNTSVILLE	

Georgia

ALBANY	HOSCHTON
AUGUSTA	KENNESAW
CALHOUN	MACON
COLUMBUS	SAVANNAH
FOREST PARK	

Florida

PANAMA CITY PENSACOLA

Since 1943
TEC1943.com

Demo Days

Komatsu showcases more than 40 pieces of equipment and technology solutions at its Cartersville Customer Center

Gaining actionable insights into how equipment and technology provide value can benefit your operation. The ability to experience a machine from the operator's seat adds value. Komatsu gave attendees the opportunity to do both during its most recent Demo Days at its Cartersville Customer Center in Georgia.

More than 40 products were available across the 38-acre demo site for customers to see up close and operate. The equipment ranged from compact excavators to large construction, forestry, demolition and mining machines, as well as forklifts and a reclaim feeder. Representatives from Komatsu and its affiliates, including Montabert, Hensley Industries and Lehnhoff, provided insights on how to effectively integrate the equipment and attachments into attendees' operations.

Komatsu Smart Construction and Smart Quarry representatives had displays set up to provide information on solutions available for jobsite management, such as Smart Construction Remote, Office, Field and Drone, as well as Smart Quarry Site and Smart Quarry Study. My Komatsu representatives provided information about Komatsu's online hub for optimal fleet management.

"What we have really focused on with Demo Days is the overall breadth of product offerings



TEC's Frazier Shoultz (left) discusses equipment with Brent Scarbrough & Company's Paul Holloway.



(L-R) Post Brothers Earthworks LLC's Colin Post, TEC's Joseph Roberts, Ruby Collins' Mitchell Myrick and Post Brothers Earthworks LLC's Jordan Post explore Demo Days.



TEC's Conner Bussman (center) shows Heritage Contracting's Kohl Patterson (left) and Jonathan Patterson (right) the excavators on display.



(L-R) ER Snell's Josh Phillips, Rick Chatfield and Jake Camp view the Komatsu excavators with TEC's John Malcom.



TEC's Brent Harmon (right) informs American Grading Solutions' Chris Powell about Komatsu's excavators.



► VIDEO

Komatsu showcases its newest excavators at Demo Days, including the PC220LCi-12 with intelligent machine control (IMC) 3.0.

and solutions we have that are designed to increase efficiencies in any size of operation and at any stage of a project,” said Andrew Earing, Director of Operator and Technical Training, Komatsu. “Customers have always appreciated the opportunity to get behind the joysticks or steering wheel and operate the machinery. More and more, we are seeing that they are now coming to learn about our technology and how to incorporate it.”

New machines stand out

Among the standout machines available to operate were Komatsu’s new standard PC220LC-12 excavator and its PC220LCi-12 intelligent machine control (IMC) 3.0 model, which features automation such as auto grade assist, auto stop control, bucket angle hold, compaction control, auto swing, and payload monitoring. The PC220LCi-12 also has 3D boundary control, which helps operators work efficiently across the entire jobsite by remembering multiple restriction zones specific to each work area. It is the first OEM factory-integrated feature of its kind in the construction industry. Auto swing with travel stop functionality is also an industry first for excavators.

The 21- to 24-ton-class PC220LC excavators have been engineered to empower operators and improve jobsite productivity. They feature a 28% larger cab with 30% more legroom versus the previous model, as well as improved visibility, reduced noise and vibration, and a high-quality, heated air-suspension seat.

“What we have really focused on with Demo Days is the overall breadth of product offerings and solutions we have that are designed to increase efficiencies in any size of operation and at any stage of a project.”

– Andrew Earing,
Director of Operator and Technical Training,
Komatsu



Watch the video

The new 8-inch HD monitor puts machine data, controls and customization options at the operator’s fingertips.

A new electronically controlled hydraulic system and high-output engine help deliver up to an 8% increase in digging force, up to 7% more lift capacity and up to a 20% reduction in fuel costs compared to the previous Komatsu PC210LC-11

Continued...

Hybrid excavator and new wheel loaders on display

... continued

model. The new P plus mode is designed to boost workload productivity by up to 18%.

"The PC220LC was built from the operator out and is the most advanced excavator Komatsu has ever built," stated Matt Moen, Product Manager, Komatsu. "Our goal was to have the machine and operator working together. The larger cab with more glass and better visibility, along with an upgraded seat, increases comfort. It has electric-over-hydraulic controls, a new touch-panel monitor that enables extensive individual customization for each operator and much more. In the near future, we will add additional automation features such as swing-to-line and travel-along-line."

In addition to the PC220LC excavators, attendees could operate the recently relaunched PC365LC-11 (formerly HB365LC-3) hybrid excavator that includes multifunction plus. It combines a new look with the same proven technology that captures energy during swing and stores it in the ultracapacitor. When swinging, all available hydraulic power is sent to the boom, arm and bucket to improve

cycle time, reduce fuel consumption and increase production. Komatsu equipped the PC365LC-11 with its Smart Construction 3D Machine Guidance solution, which brings 3D to most conventional excavators. This gives operators in the field and managers in the office access to design and topographic data, helping drive accuracy, control load volumes and promote optimization.

"This is always such a great event for customers, their dealers and for us, and we really enjoy being able to provide educational and operational opportunities."

— Andrew Earing,
Director of Operator and Technical Training,
Komatsu

Komatsu also spotlighted its new WA475-11 and WA485-11 wheel loaders, which deliver lower fuel consumption, higher engine power and greater climbing speed compared to previous models. Both have a Komatsu Hydraulic Mechanical Transmission (KHMT) engineered for improved fuel efficiency and productivity, as well as large, comfortable cabs that help reduce fatigue.

Smart Construction and other demonstrations

Komatsu demonstrated its Smart Construction Drone solution, which provides accurate jobsite topography safely, quickly and easily.

"The ability to fly and map a jobsite and send that data back to the office or field personnel digitally expedites the time it takes to evaluate the condition or the state of the project," noted Earing. "Being able to track that in near-real time helps you make faster production and efficiency decisions regarding scheduling, resources and more. The data can easily be moved into other solutions, such as Dashboard."

Demonstrations were also available for Komatsu's FH120 forklift, RF-5 reclaim feeder and PC490HRD-11 high-reach demolition excavator equipped with the K100 boom change system that allows for hands-free boom changes from the cab of the machine.

"This is always such a great event for customers, their dealers and for us, and we really enjoy being able to provide educational and operational opportunities," concluded Earing. "This Demo Days was a little rainy and chilly, but that didn't seem to deter anyone from putting the machines to the test, which we like to see." ■



(L-R) Dekalb Pipeline Company's David Parsons, Caleb Phillips, Ethree King and James King meet with TEC's Jason Smith at Demo Days.



(L-R) At Demo Days, TEC's Dwight Swaim talks with CTS Excavations' Jerry Robinson, Murphy Putnam, Oscar Moreno and Connor Rochelle about the Komatsu dozers.



LEEBOY
FAYAT GROUP



BUILDING AMERICA ***ONE ROAD AT A TIME***



ALABAMA

Alabaster
Anniston
Birmingham
Decatur
Dothan

Huntsville
Mobile
Montgomery
Tuscaloosa

FLORIDA

Panama City

Pensacola



LEARN MORE AT WWW.LEEBOY.COM



TEC1943.com

Showstopping solutions

SENNEBOGEN highlights innovation and technology across multiple machines at CONEXPO-CON/AGG 2026

SENNEBOGEN used CONEXPO-CON/AGG 2026, North America's largest construction trade show, as a major platform to showcase new machines and technology focused on efficiency, stronger performance and enhanced operator comfort, including its 360 G, 830 R-HDD and 718 E models.

The SENNEBOGEN 360 G is a heavy-duty industrial telehandler engineered for demanding material handling, recycling and industrial loading applications. Built to combine the lifting versatility of a telehandler with the breakout force of a wheel loader, the 360 G delivers up to approximately 13,200 pounds of lifting capacity and a maximum lift height of nearly 28 feet.

Powered by a 165-horsepower diesel engine, the machine features powerful hydraulics, Z-kinematics loader technology and responsive controls for fast, efficient cycle times. Its elevating Multicab raises the operator to an eye level of nearly 14 feet and provides full 360-degree visibility for improved precision and jobsite safety when working around trucks, containers and stockpiles. The hydraulic quick-coupler system allows fast attachment changes for buckets, pallet forks and specialized tools, making the 360 G a versatile solution for recycling yards,

sawmills, bulk material operations and industrial facilities.

Purpose-built demolition

The SENNEBOGEN 830 R-HDD is a purpose-built heavy-duty demolition and material handling machine engineered for demanding scrap, recycling and industrial applications. Built with reinforced construction and a rugged undercarriage, the 830 R-HDD delivers exceptional durability and stability in high-impact environments.

The machine combines powerful hydraulic performance with precise multifunction control for handling grapples, magnets, shears and other heavy attachments. The 830 R-HDD has the strength needed for continuous-duty operation, and its advanced hydraulic system delivers fast cycle times and responsive attachment control. The elevating operator cab improves visibility into trailers, shredders and processing areas, helping increase productivity and jobsite safety.

Powerful tree management

The SENNEBOGEN 718 E delivers powerful performance for utility, forestry and right-of-way applications where reach, visibility and safety are critical. Designed for demanding tree care operations, the 718 E features a telescopic boom with up to 43 feet of reach, allowing operators to safely handle trimming, removals and debris management from a greater distance. Its elevating Maxcab raises up to a height of 18 feet and tilts 30 degrees, providing exceptional visibility into the work zone for increased precision and operator confidence. Heavy-duty guarding and stable handling help maximize productivity while reducing crew exposure in hazardous tree removal applications.

Powered by a 160-horsepower diesel engine, the machine combines strong hydraulic performance with smooth multifunction operation for attachments such as grapple saws, shears and mulchers. Available in wheeled or crawler configurations, the 718 E offers excellent maneuverability in urban environments, along roadsides and near utility corridors. ■

During CONEXPO-CON/AGG, SENNEBOGEN spotlights a variety of machines to fit multiple applications, including its 360 G, 830 R-HDD and 718 E models.



PURPOSE-BUILT TO WASH AWAY DOWNTIME.

Get superior visibility with an elevating MaxCab equipped with bulletproof glass, 2-camera system, skylight, and catwalk, which are all standard. Build the cab that fits your needs from one of our cab configurations for max safety, loading accuracy and stability in your operation.

Consume 30% less energy while outlifting larger conventional machines with the SENNEBOGEN 870E, meaning you can lift more and pay less. From configuring the material handler to fit your needs to all the after-sales support to back it up, SENNEBOGEN material handlers don't just stand out because of their color.



+1 704-347-4910
sales@sennebogenllc.com
sennebogen-na.com
sales@tec1943.com
tec1943.com

SENNEBOGEN 

3 STATES 20 LOCATIONS 29 PSSRs



ALABAMA

ALABASTER

DALTON CAMPBELL (205) 586-7336

ANNISTON

ADAM FEAZELL (256) 343-4261

BIRMINGHAM

ALAN COOPER (205) 965-4131
JOHN BARBEE (205) 363-0870

DECATUR

RICKY MATHIS (256) 338-4574

DOTHAN

ANDREW LARSEN (334) 350-4392

MOBILE

RYNE PHELPS (205) 757-6910

MONTGOMERY

TOULOUSE JOHNSON (334) 306-9541
TRIPP ADAMS (334) 850-8249

HUNTSVILLE

GARY DODD (256) 677-3877

TUSCALOOSA

KENT WATKINS (205) 361-0083

FLORIDA

PANAMA CITY

JOEY MAJORS (850) 527-1840

PENSACOLA

MIKE DOUGLAS (850) 554-3234

GEORGIA

ALBANY

PIERCE MOSLEY (921) 245-0176
HANK DUNN (229) 894-6139

AUGUSTA

JASON HAMRICK (706) 339-3949

CALHOUN

EDWIN MURRAY (770) 608-6525
ANDY WORLEY (770) 548-5342

COLUMBUS

GEORGE COPELAN (706) 577-4163

FOREST PARK

NICHOLAS WINKLER (423) 664-3013
CODY SMITH (205) 454-0458
ZACHARY BRISCOE (770) 519-9616

HOSCHTON

JESUS MUNIZ (678) 725-2113
CARTER WOOD (678) 733-2981

KENNESAW

JACOB ALTMAN (678) 237-1520

MACON

BRIAN WEBB (205) 844-7646
MARK CATHEY (770) 584-7277

SAVANNAH

SETH BURNHAM (205) 354-7236
CODY REEVES (478) 957-0936



PRODUCT SUPPORT TEAM



My Komatsu Parts 360

New enhancements streamline ordering in a few simple steps for efficient fleet service planning

Komatsu continues to enhance the digital ownership experience for equipment users through My Komatsu, its comprehensive online central portal designed to make fleet management and parts ordering easier than ever. A key initiative was recently launched to improve ordering on My Komatsu, called “Parts 360.” The goal was to roll out an end-to-end solution that simplifies everything from identifying the right component to tracking delivery.

According to Michael Carranza, Komatsu’s Senior Manager of Digital Experience, Parts 360 was embarked on with a clear mission: “We wanted to take care of the customer from looking up the part to delivery at their jobsite.”

Carranza explained that every stage of the process is designed with efficiency and flexibility in mind, giving customers the power to choose what works best for their workflow — whether that means picking up items at a local dealership or having Komatsu ship them directly to a jobsite.

The Parts 360 enhancements deliver a streamlined, intuitive shopping experience that removes guesswork and reduces downtime. Through My Komatsu, users can easily search for the correct components by selecting their machine’s model and serial number or by browsing categories, products and parts. If a customer doesn’t know the specific name of a part, Carranza noted that they can “look at pictures and diagrams of their machines to find out what the part number is and what it’s called.”

Once parts are added to the cart, users gain immediate access to critical information, including

inventory levels, lead times and branch availability, as well as any current promotions.

“It’s all at their fingertips,” stated Carranza.

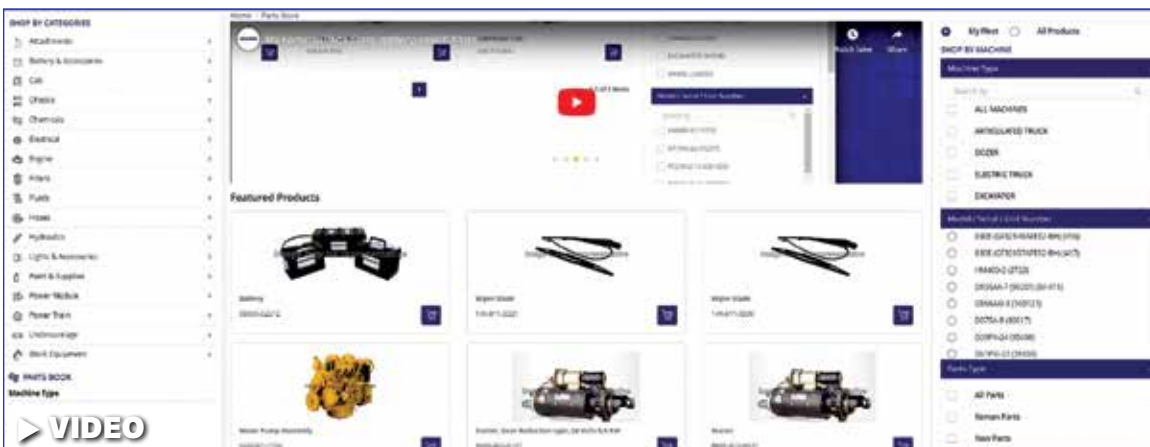
Product images give added reassurance and enhanced shopping tools — such as freight estimates and order cutoff times — help customers plan repairs with confidence, according to Carranza.

Ordering parts is now made simpler than ever:

1. Log in to your My Komatsu account via desktop or the mobile app.
2. Select a registered machine from your fleet or enter a model number.
3. Search for the needed part by keyword, category or visual diagram.
4. Add items to the shopping cart, and review availability and shipping options.
5. Choose fulfillment — pickup, jobsite delivery or a combination of both.
6. Submit payment, confirm the order, and enroll in text or email updates.

After checkout, these enhancements continue to deliver value. Customers receive real-time notifications from processing to delivery, eliminating uncertainty.

Carranza emphasized, “There’s no second guessing. You know where your order is in the process. With the Parts 360 enhancements, Komatsu reinforces its commitment to uptime by putting genuine parts, transparent information and flexible fulfillment directly into customers’ hands — at no additional cost.” ■

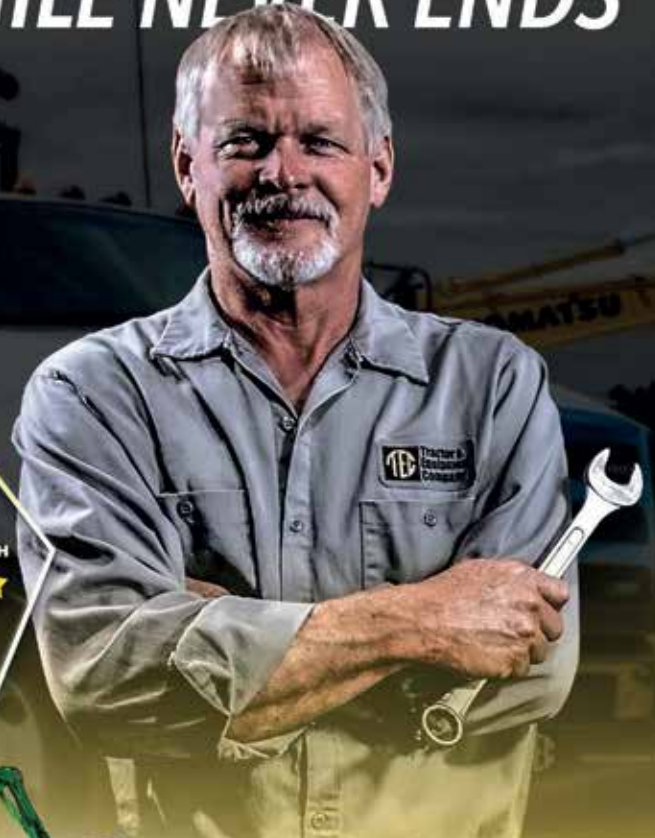


Watch the video

New online ordering enhancements from the Parts 360 project make My Komatsu an end-to-end solution that can simplify your experience from finding the right component to tracking delivery.



THE EXTRA MILE NEVER ENDS



WITH 20 CONVENIENT LOCATIONS, WE'VE GOTCHA COVERED!

BIRMINGHAM, AL
(205) 591-2131

MONTGOMERY, AL
(334) 288-6580
(800) 832-9563

TUSCALOOSA, AL
(205) 752-0621
(800) 582-4625

ALABASTER, AL
(205) 621-2489

ANNISTON, AL
(256) 831-2440

MOBILE, AL
(251) 457-8991
(800) 233-7213

DOTHAN, AL
(334) 678-1832

DECATUR, AL
(256) 355-0305

HUNTSVILLE, AL
(256) 851-2222

FOREST PARK, GA
(404) 366-0693
(800) 488-0693

HOSCHTON, GA
(706) 654-9850
(888) 334-9850

KENNESAW, GA
(678) 354-5533

CALHOUN, GA
(706) 879-6200
(800) 827-3072

MACON, GA
(478) 745-6891
(800) 786-3120

SAVANNAH, GA
(912) 330-7500
(800) 827-1405

COLUMBUS, GA
(706) 562-1801

AUGUSTA, GA
(706) 798-7777
(800) 659-3090

ALBANY, GA
(229) 435-0982
(800) 733-0982

PANAMA CITY, FL
(850) 763-4654
(800) 342-2055

PENSACOLA, FL
(850) 505-0550