

Fall 2025



# Tractor Times



**KOMATSU**

**SMARTCONSTRUCTION**

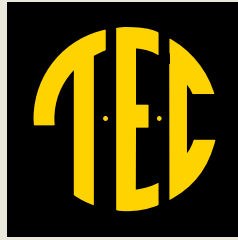
**Intelligent** 2.0  
MACHINE CONTROL





Chad Stracener

**Many solutions  
available**



Dear Valued Customer:

Equipment showcases are a great way to gain firsthand experience with new machines and learn from experts. You won't want to miss North America's largest trade show, CONEXPO-CON/AGG, which will take place March 3-7, 2026, in Las Vegas. It will arrive sooner than you think, but for now, you can check out a preview of the event in this issue. Be sure to visit Komatsu's booth at the show to see its latest solutions.

On that note, I am excited to inform you that Komatsu just released its next-generation PC220LC-12 and PC220LCi-12 excavators, which deliver the most comfortable and advanced excavator work environment Komatsu has ever created. By empowering operators with enhanced comfort, cutting-edge technology and customizable features, these new excavators represent the next step forward for contractors seeking to maximize productivity and reduce total cost of ownership.

Plus, Komatsu recently introduced its new WA475-11 and WA485-11 wheel loaders. Both offer lower fuel consumption and more engine power compared to their predecessors. Yard loader configurations designed to support higher productivity in aggregate applications are available for both models.

We also offer an in-depth look at My Komatsu, Komatsu's comprehensive digital hub, which provides an easy way to collect, visualize and monitor machine information from both Komatsu and non-Komatsu equipment. It can help benefit your bottom line by providing time and cost savings.

There are several other valuable articles for you to enjoy as well, including an update on bonus depreciation, which was recently restored to 100%.

As always, if there is anything we can do for you, please feel free to call or stop by one of our 20 locations.

Sincerely,

Chad Stracener  
Chairman/CEO



# Tractor Times

TEC1943.com

## In this issue

### Old friends and new technology pg. 4

Find out how Superior Grading LLC blends family values and GPS-driven precision to elevate sitework quality and efficiency.

### A field for the future pg. 9

Discover how TEC's Bill Roberts is being honored for decades of service.

### Powered by people and precision pg. 10

Meet the Millers, who own and operate Greensouth Contracting LLC.

### Experience the next level of innovation pg. 14

Preview CONEXPO-CON/AGG 2026.

### Debuts for WIRTGEN GROUP pg. 16

Take a look at the new machines from the WIRTGEN GROUP.

### Engineered for those who get it done pg. 19

See Komatsu's new PC220LC-12 and PC220LCi-12 excavators.

### Komatsu introduces WA475-11 and WA485-11 pg. 21

Check out Komatsu's new wheel loaders.

### Purpose-built forestry machine pg. 22

View the new TimberPro TN230D log loader.

### Interactive experience for customers pg. 24

Explore Quarry Days.

### Make the most of your telematics data pg. 27

Learn more about My Komatsu.

### Advanced formula with phosphates pg. 29

Get a glimpse of the new Komatsu Supercoolant.

### Tax-advantaged machinery purchases pg. 30

Read about bonus depreciation.



TEC1943.com

**Birmingham, AL**  
(205) 591-2131

**Tuscaloosa, AL**  
(205) 752-0621  
(800) 582-4625

**Anniston, AL**  
(256) 831-2440

**Alabaster, AL**  
(205) 621-2489

**Dothan, AL**  
(334) 678-1832

**Huntsville, AL**  
(256) 851-2222

**Montgomery, AL**  
(334) 288-6580  
(800) 832-9563

**Decatur, AL**  
(256) 355-0305

**Mobile, AL**  
(251) 457-8991  
(800) 233-7213

**Panama City, FL**  
(850) 763-4654  
(800) 342-2055

**Pensacola, FL**  
(850) 505-0550

**Forest Park, GA (Atlanta)**  
(404) 366-0693  
(800) 488-0693

**Calhoun, GA**  
(706) 879-6200  
(800) 827-3072

**Macon, GA**  
(478) 745-6891  
(800) 786-3120

**Columbus, GA**  
(706) 562-1801

**Hoschton, GA**  
(706) 654-9850  
(888) 334-9850

**Kennesaw, GA**  
(678) 354-5533

**Augusta, GA**  
(706) 798-7777  
(800) 659-3090

**Savannah, GA**  
(912) 330-7500  
(800) 827-1405

**Albany, GA**  
(229) 435-0982  
(800) 733-0982

*Published for TEC.  
© 2025 CPI.  
Printed in the USA.*

## The Products Plus The People To Serve You

### Tractor & Equipment Company

**Chad Stracener**, Chairman/CEO

**DeVaughn Pettit**, President

**Jeremy Tolbert**, Executive V.P./General Manager – Product Support

**Brett Bussman**, Senior V.P./General Manager – AL

**Jamie Steele**, Senior V.P./CFO

**Joe Patton**, V.P./Regional Sales Manager – AL

**Autrey McMillan**, V.P./Regional Sales Manager – AL & FL

**Bill Murphree**, Regional Sales Manager – GA

**Andrew Pettit**, V.P./Regional Sales Manager – GA

**Brian Holder**, V.P./Regional Sales Manager – GA

**Greg Madaris**, V.P./Sales Administration

**Mike Burkes**, V.P./Service – AL & FL

**Russ Lane**, General Service Manager – GA

**Chris Kohlenberg**, V.P./Parts Operations

**Greg Carroll**, V.P./Sales-Major Accounts – GA

**Travis Howell**, V.P./Wirtgen Group Products

**Chris Lucas**, V.P./Information Technology

**Copeland Bush**, Director of Product Support – AL & FL

**Hunter Carroll**, Director of Product Support – GA

**Jake Osborn**, Director of Product Support-Major Accounts – AL

**Jim Hensley**, Director of Product Support-Major Accounts – GA

**Ben Osborn**, Director of Superior Products

**Mark Shoults**, Manager of Used Parts

**Tim Thomas**, Used Equipment Manager

**John Pierce**, New Equipment Rental Manager

### Alabama

#### Birmingham

**Shay Holliday**, Branch Manager

**Bert Suttle**, Service Manager

**Tim Woods**, Parts Manager

#### Tuscaloosa

**Jody Thomason**, V.P./Branch Manager

**Keith Watkins**, Service Manager

**Matt Tolbert**, Parts Manager

#### Anniston

**Alan Preston**, Branch Manager

**Nick Kay**, Service Manager

**Buck Brown**, Parts Manager

#### Decatur

**Zach Thomas**, Branch Manager

**T.J. Smith**, Service Manager

**Shawn Pewitt**, Parts Manager

#### Huntsville

**Daniel Kent**, Service Manager

**Jann Patterson**, Parts Manager

#### Dothan

**Chuck Tibbets**, V.P./Branch Manager

**Christopher Simer**, Service Manager

**Drew Bronson**, Parts Manager

#### Alabaster

**Randy Hawkins**, Branch Manager

**Hunter Powell**, Parts Manager

#### Montgomery

**Andy Huggins**, Branch Manager

**Steven Blake**, Service Manager

**Blake Bishop**, Parts Manager

#### Mobile

**Chris Howard**, Branch Manager

**Robert Bush**, Service Manager

**Tyler Blackwell**, Parts Manager

#### Renew Center

**Gerald Blakey**, Service Manager

### Florida

#### Panama City

**Chuck Tibbets**, V.P./Branch Manager

**Adam Sheppard**, Service Manager

**Jake Toxey**, Parts Manager

#### Pensacola

**Kenneth Smith**, Branch Manager

**Curt Ernest**, Service Manager

**Chris Smith**, Parts Manager

### Georgia

#### Forest Park (Atlanta)

**Kenneth Middlebrooks**,

Service Manager

**Joe Bechtel**, Parts Manager

#### Calhoun

**Charlie Pettit**, Branch Manager

**Alan Rainwater**, Service Manager

**Paul Johnson**, Parts Manager

#### Macon

**Kyle McMahon**, Branch Manager

**Jason Witcher**, Service Manager

**Christian Thompson**, Parts Manager

#### Columbus

**Jon Lake**, Branch Manager

**Joshua Prater**, Service Manager

**Jake Mapp**, Parts Manager

#### Hoschton

**Frank Garcia**, Service Manager

**Allen Brown**, Parts Manager

#### Kennesaw

**Jason Smith**, V.P./Branch Manager

**Nash Barney**, Service Manager

**Taylor Oden**, Parts Manager

#### Augusta

**Keith Smith**, Service Manager

**John Owens**, Parts Manager

#### Savannah

**Frank Dabbs**, Branch Manager

**Jason Dowd**, Service Manager

**Josh Shoults**, Parts Manager

#### Albany

**Ben Davis**, Service Manager

**Pierce Mosley**, Parts Manager

**KOMATSU**

# Old friends and new technology

## Superior Grading LLC blends family values and GPS-driven precision to elevate sitework quality and efficiency



Randy McDaniel,  
Co-owner and  
Estimator



Bart Booker,  
Co-owner and  
General Superintendent

**S**uperior Grading LLC, a family-oriented, Alabama-based construction company, has made a name for itself in commercial and industrial sitework since its establishment in 2010. Co-owners Randy McDaniel and Bart Booker, who each have decades of industry experience, started Superior Grading out of Trussville, with a handful of trusted contacts and a commitment to quality work.

"Bart and I worked together for over 30 years before we founded Superior," McDaniel recalled.

"Now, with 14 years under our belt, our focus remains the same: deliver top-quality work and build lasting relationships," stated Booker.

This deep sense of loyalty forms the backbone of Superior Grading's culture, extending to both its staff and its long-standing partnerships. With a team of around 16 employees, Superior Grading can stay flexible and efficient.

"Our personnel have allowed us to be successful," said McDaniel. "You're only as good

as the people you have with you, and most of our guys have been with us for quite a while."

"We're close with all of our employees, and we make sure that if they need anything, we're always there for them," added Project Manager Justin Booker, Bart's son.

---

***"Our fleet is almost exclusively made up of Komatsu's IMC machines, which have GPS technology and really help us get projects done on time."***

*-Randy McDaniel,  
Co-owner and Estimator,  
Superior Grading LLC*

---

From sport complexes to industrial sites, Superior Grading has tackled various terrains and conditions across Alabama.

"We do anything from a 1-acre site up to about a 6-acre site," McDaniel elaborated.

### IMC precision

Superior Grading's current Hewitt-Trussville High School softball complex project, a 2-acre site, exemplifies its commitment to precision. The project is nearing completion, and Superior Grading is proud to contribute to the community with this essential infrastructure.

"This field is going to be a state-of-the-art facility for local athletes," McDaniel shared. "Our role here is site preparation, which includes installing underground detention systems and fine grading for artificial turf installation."

To meet stringent project parameters, Superior Grading relies heavily on its Komatsu equipment. At the softball field project, the company utilized a Komatsu D61PXi intelligent machine control (IMC) dozer, a Komatsu PC290LCi IMC excavator, a Komatsu PC210LC excavator and several HAMM rollers. The productivity and durability of Komatsu's equipment allows the company to handle projects with fewer people and greater accuracy.

"Our fleet is almost exclusively made up of Komatsu's IMC machines, which have GPS technology and really help us get projects done on time," emphasized McDaniel.

### Customer snapshot

**Company:** Superior Grading LLC

**Location:** Trussville, Alabama

**Employees:** Approximately 16

**Established:** 2010

**Areas of expertise:** Commercial and industrial sitework

**Komatsu equipment:** D61PXi IMC dozer; PC290LCi IMC excavator; PC210LC excavator

**Komatsu technology:** intelligent machine control (IMC)

An operator places material between pipes with a Komatsu PC210LC excavator.







Operators work in tandem with a Komatsu PC210LC excavator and a Komatsu D61PXi intelligent machine control (IMC) dozer to efficiently remove material.

Bart Booker estimates that the IMC equipment has resulted in an 85% to 90% boost in efficiency, which has allowed Superior Grading to meet tighter project timelines without compromising quality.

***"You can't find better people than the ones who work at TEC."***

*-Randy McDaniel,  
Co-owner and Estimator,  
Superior Grading LLC*

"With Komatsu's IMC technology, the grading process is much more streamlined," added Justin Booker. "We used to need three men to manage grading accuracy. Now, with GPS-guided equipment, one person can complete tasks that would typically require multiple employees. That benefits us because we're a smaller company, so our employees can be spread out on other jobs that need to be done."

Komatsu's technology has also proven essential for projects that require tight tolerances, such as excavation for retaining walls and other precise cuts.



Superior Grading's fleet includes a Komatsu PC290LCi IMC excavator.

"The IMC excavator won't let us overdig, saving us on materials and labor," Bart Booker explained. "It's accurate within inches, which means we can use less gravel and reduce time spent adjusting grades. The precision has not only improved our efficiency but has also contributed to significant cost savings, which can be passed on to our clients."



Discover more at  
**TECTractorTimes.com**

*Continued...*



# 'Our relationship with TEC goes back to when we first started'

... continued



**Justin Booker,**  
Project Manager

## Long-standing relationship with TEC

Superior Grading has formed a decades-long partnership with Tractor & Equipment Company, which provides reliable support and flexibility for increased productivity across projects.

**"TEC's support team keeps us running."**

*-Bart Booker,  
Co-owner and General Superintendent,  
Superior Grading LLC*

"Our relationship with TEC goes back to when we first started," McDaniel recalled. "Dan Stracener, TEC's former CEO, trusted us from the beginning.

He told us if we couldn't pay for the equipment right away, just send it back. You can't find better people than the ones who work at TEC. Their service, sales, support staff — it just fits in our game plan, and it's perfect for us."

"TEC's support team keeps us running," Bart Booker stated. "They are always on time for maintenance, and their staff's expertise ensures we're never delayed due to equipment issues."

Randy Hawkins, a TEC sales representative, assists Superior Grading with its equipment and maintenance needs.

"Randy Hawkins has also been with us since day one," noted McDaniel. "I first met Randy over 30 years ago when I was just starting in the industry, and he's stayed in contact with us through every turn. Even when we transitioned to starting our own company, he was right there with us as our sales rep, making sure we had everything we needed. He's been a constant support and a key part of why we continue to work with TEC."

## Staying consistent

Looking ahead, Superior Grading is optimistic about continued growth while remaining focused on the present.

"Business has been steady, even through challenges like COVID," McDaniel reflected. "Our focus now is to keep our team working, ensure their families are supported, and stay consistent in the quality of work we're known for. I can't say exactly what the future holds, but I'm confident in our team's ability to adapt and keep moving forward." ■

*\*The opinions expressed here are from the end user as quoted. The results described herein are those of these end users under certain conditions. Individual results may vary.*

## By the numbers

- **85% to 90%** boost in efficiency with Komatsu IMC equipment, according to Superior Grading
- **40+** years of experience in the industry for each co-owner
- **4 to 5** jobs are typically ongoing at one time for Superior Grading
- **2-acre** softball complex currently underway



(L-R) Superior Grading's Bart Booker, Justin Booker and Randy McDaniel work with TEC's Randy Hawkins to find the right equipment to complete projects on schedule.

An operator efficiently grades with a Komatsu D61PXi IMC dozer.

► VIDEO





# SMART CONSTRUCTION




**Tractor & Equipment Company** knows that productivity is a key factor to the success of any job site. Komatsu's Intelligent Machine Control technology is designed with your productivity in mind. Through automatic dozing, rough cut to finish grade, IMC-equipped machines help you make every pass count to achieve superior production compared to traditional aftermarket systems.



TEC1943.COM





Montabert V32 variable  
hydraulic breaker



Lehnhoff  
quick coupler

# Innovative solutions. Positive transformation.

You need a partner that can meet your needs and embrace the future. One with new solutions for a changing world. Together, we can work toward a better future.

Komatsu



Montabert



Lehnhoff



**KOMATSU**



**Lehnhoff®**



# A field for the future

## TEC's Bill Roberts celebrated for decades of service and community impact with softball field dedication

**B**ill Roberts, former chairman and CEO of Tractor & Equipment Company, was recently honored with the dedication of a new softball field in Trussville, Ala., bearing his name. For a man who has spent his life committed to community service and TEC, this dedication marks a culmination of his legacy. The dedication not only celebrates Roberts' professional achievements but also his commitment to Trussville's development, particularly in supporting youth initiatives.

"I love this city and our school system," Roberts shared. "The chance to see young people grow, learn and succeed here is what I'm passionate about, and this field is another way to encourage their success."

Roberts' journey with TEC began in 1957 when he joined the company directly out of high school, starting in the parts department with an hourly wage of just \$1. Through decades of dedication and hard work, he ascended the ranks, eventually becoming chairman and CEO before his retirement in 1994.

"I never imagined TEC would grow to what it is today," Roberts said. "The company has always been customer-first, and it's fulfilling to see that commitment endure."

Since retiring, Roberts has focused his efforts on community service, particularly within the Trussville school system. His involvement with the school board, where he served as the president for six years, has been profound. Roberts continues to advocate for student success, and he and his wife provide two scholarships each year to high school students.

Reflecting on his involvement, Roberts noted, "Working with young people has been my passion. If we can educate our young people, we're already one step ahead, and that's a legacy I'm proud to support."

### Softball field dedication

In addition to his work with the school district, Roberts has been active in supporting local sports, particularly softball. The Hewitt-Trussville High School softball team has achieved statewide acclaim, winning four out of the last five state championships. Roberts has played a key role in the construction of the new field, a joint project between the Trussville school board and the city.

"Our girls deserved something special," Roberts declared with pride. "This stadium reflects the excellence they've achieved and the community's support."

Roberts expressed a mix of surprise and gratitude after finding out the field would be dedicated in his name.

"I was honored," Roberts commented. "I never expected this, and it's pretty special."

### Lasting legacy

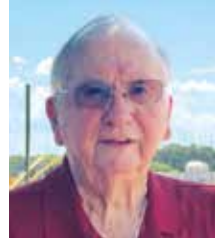
Roberts' connection to TEC has remained strong over the years, even as he transitioned into retirement. His relationships with TEC's leaders, including his successors Jim Waitzman, Dan Stracener and Chad Stracener, have been instrumental in maintaining his bond with the company.

"TEC is a part of me," Roberts reflected. "I still think of it as our company, and seeing its continued success makes me proud."

This new softball field reflects Roberts' lasting impact on both TEC and Trussville. His commitment to TEC and his community has shaped countless lives, making this dedication a fitting tribute. As he looks toward the future, Roberts remains optimistic.

"I've been blessed with a great life and the chance to give back," Roberts stated. "That's what it's all about — leaving something meaningful for those who come after."

The field will be a permanent reminder of Roberts' dedication to building a strong foundation for TEC, Trussville and the young athletes who now have a place to excel. ■



**Bill Roberts,**  
Former Chairman  
and CEO,  
TEC



Discover more at  
[TECTractorTimes.com](http://TECTractorTimes.com)

**The new Hewitt-Trussville High School softball field is under construction and will be named after Bill Roberts.**



▶ VIDEO



# Powered by people and precision

A family-run grading contractor balances skilled labor with advanced machine control technology for dependable results



Scott Miller,  
Owner



Brooke Miller,  
Supervisor

**S**cott Miller started Greensouth Contracting LLC in 1999 with little more than determination and a rented tractor. Working job to job, he covered equipment costs only after completing each project, often relying on creativity and grit to keep the business moving. At just 26 years old, Scott began a journey that would evolve from solo operations to a robust grading and utilities company serving central Georgia and parts of Alabama.

"When I started out, I was just trying to make ends meet, renting equipment and knocking out small jobs," recalled Scott. "There were a lot of long days and longer nights just trying to make it work."

Over the years, Greensouth built its reputation on turnkey site development — clearing, grading, installing storm and sewer systems, and delivering finished lots for residential and commercial construction. The company now

completes an average of 10 to 15 smaller sites annually and up to four larger subdivisions, some spanning 50 to 60 acres and requiring the movement of more than 400,000 cubic yards of dirt.

---

***"We have some of the best people you could ask for."***

- Scott Miller,  
Owner,

Greensouth Contracting LLC

---

"We're based in Columbus, Georgia, and most of our projects are within a 100- to 150-mile radius," Scott explained. "We'll go farther if the job makes sense, but we've built long-term relationships that help keep us close to home."

That relationship-based approach extends to both clients and employees. Scott credits the company's success to the people around him — many of whom have been part of the business for years.

"We have some of the best people you could ask for," Scott declared. "A lot of our people are self-sufficient and take ownership of their work. It makes a huge difference when you can trust the team around you."

Brandie Mazingo, the company's office manager and HR lead, echoed that sentiment.

"There's a family environment here," said Brandie. "We trust each other, and that keeps us moving forward."

Greensouth's philosophy of hard work and flexibility helped the business weather industry downturns. In the early 2000s, Greensouth diversified into waste management and pond building before refocusing on site development.

"I drove garbage trucks at night and graded during the day," recounted Scott. "That's how we got through the lean years."

## IMC streamlines projects

Today, the backbone of Greensouth's efficiency lies in its equipment fleet — much of which comes from Komatsu and is supported by Tractor & Equipment Company and sales representative Jon Lake. Greensouth runs Komatsu intelligent machine control (IMC) equipment, including D39PXi-24, D51PXi-24, D61PXi-24 and D71PXi-24 dozers, as well as a PC390LCi-11 excavator.

## Customer snapshot

**Company:** Greensouth Contracting LLC

**Location:** Columbus, Georgia

**Employees:** 35-40

**Established:** 1999

**Area of expertise:** Turnkey site development

**Komatsu equipment:** D39PXi-24, D51PXi-24, D61PXi-24 and D71PXi-24 IMC dozers; PC390LCi-11 IMC excavator; PC390LC-11 and PC490LC-11 excavators; HM300 haul trucks; WA270 wheel loader

**Komatsu technology:** intelligent machine control (IMC)



Discover more at  
[TECTractorTimes.com](http://TECTractorTimes.com)

An operator moves material with a Komatsu D61PXi-24 intelligent machine control (IMC) dozer.

## ► VIDEO







## ► VIDEO

Operator James Brooks uses a Komatsu PC490LC-11 excavator to load a Komatsu HM300 articulated haul truck operated by Kaitlin Folds.

"The first IMC machine we bought was a D51PXi," noted Scott. "Once we saw what GPS could do for us, we couldn't imagine going back."

The adoption of IMC technology has reshaped how Greensouth operates. The team no longer relies heavily on staking or tape measures to hit grade. Instead, GPS-equipped machines cut swales, build pads and execute complex grades directly from digital models.

"On a subdivision road, I used to spend weeks staking and checking grades," Scott acknowledged. "Now, the machine does it right the first time — on grade and ready to go."

***"The first IMC machine we bought was a D51PXi. Once we saw what GPS could do for us, we couldn't imagine going back."***

*- Scott Miller,  
Owner,  
Greensouth Contracting LLC*

Jon estimated that IMC technology has helped improve Greensouth's efficiency by at least 30%, but Scott believes the gains are even higher.

"I'd say we're closer to 40% more efficient," claimed Scott. "We're saving on survey costs, fuel labor — everything. We're delivering better results faster."

Greensouth continues to invest in technology, and it recently purchased equipment and software to build models in-house using Topcon systems. Scott's daughter, Brooke, is a supervisor at the company and credits IMC for accelerating her development as an operator.

"I started as just a general laborer — swinging a sledgehammer, putting in silt fence, building brick boxes," described Brooke. "I had to do it all on my own, and I'm really thankful for that. Starting from the bottom and learning everything along the way is what made me the operator I am today. I've been able to experience all types of trackhoes, and I love the PC390LCi. The IMC is very useful, and it makes everything easier to understand. You can see the jobsite layout in 3D and hit grade without second-guessing. It's amazing."

Supervisor Karl Arvin, who runs a Komatsu D61PXi-24 IMC dozer, said the equipment is both versatile and comfortable.

"It's like riding in a Cadillac," commented Karl. "You can knock down, fill and fine grade all in one machine."

Greensouth also utilizes several standard Komatsu machines, such as PC390LC-11 and PC490LC-11 excavators, HM300 haul trucks, and WA270 wheel loaders, as well as HAMM rollers.

## Trusted support from TEC

Scott's relationship with TEC has helped ensure uptime and performance across the fleet.



**James Brooks,  
Operator**



**Kaitlin Folds,  
Lead Truck Driver**



Discover more at  
TECTractorTimes.com

*Continued...*



# 'Jon and TEC have been great'

... continued



Karl Arvin,  
Supervisor



Heath Emerson,  
Project Manager

"Jon and TEC have been great," reflected Scott. "Whether it's parts, service or training, they are there when we need them. I don't have any complaints — they've always stepped up to take care of us."

Support has extended beyond sales. Project Manager Heath Emerson highlighted TEC's role in keeping the team equipped and informed.



Greensouth works closely with TEC for all its equipment needs, including compactors like the HAMM HC 100i.

"They're quick to respond when something needs attention," stated Heath. "You're not waiting days or weeks — they make sure you're taken care of right away. That kind of support is huge when you're trying to stay on schedule and keep crews moving."

---

***"The IMC is very useful, and it makes everything easier to understand."***

*- Brooke Miller,  
Supervisor,  
Greensouth Contracting LLC*

---

## Looking ahead

For Scott, the combination of good people, advanced technology and reliable distributor support is what sets Greensouth apart.

"We're family-owned, we value our employees and our clients, and we're always looking to grow and improve," Scott concluded. "We have about a year and a half of work on the books and plans to get into development and demolition. We're not slowing down." ■

*\*The opinions expressed here are from the end user as quoted. The results described herein are those of these end users under certain conditions. Individual results may vary.*

## By the numbers

- **10 to 15** smaller sites completed annually and up to **4** larger subdivisions, some spanning **50 to 60** acres
- **100- to 150-**mile working radius around Columbus
- Up to **40%** more efficient with Komatsu IMC equipment

Greensouth is an estimated 40% more efficient on projects thanks to the adoption of Komatsu IMC equipment like the D71PXi-24 dozer.





A JOHN DEERE COMPANY



# Your one-stop supplier.

➤ [www.wirtgen-group.com/technologies](http://www.wirtgen-group.com/technologies)

CLOSE TO OUR CUSTOMERS

**ROAD AND MINERAL TECHNOLOGIES.** With leading technologies from the WIRTGEN GROUP, you can handle all jobs in the road construction cycle optimally and economically. Put your trust in the WIRTGEN GROUP team with the strong product brands WIRTGEN, VÖGELE, HAMM, KLEEMANN.

➤ [www.wirtgen-group.com](http://www.wirtgen-group.com)

WIRTGEN

/

VÖGELE

/

HAMM

/

KLEEMANN



#### Alabama

ALABASTER	DOTHAN
ANNISTON	MOBILE
BIRMINGHAM	MONTGOMERY
DECATUR	TUSCALOOSA
HUNTSVILLE	

#### Georgia

ALBANY	HOSCHTON
AUGUSTA	KENNESAW
CALHOUN	MACON
COLUMBUS	SAVANNAH
FOREST PARK	

#### Florida

PANAMA CITY PENSACOLA

**Since 1943**  
TEC1943.com



# Experience the next level of innovation

**CONEXPO-CON/AGG will return to Las Vegas with new features slated for North America's largest construction trade show**

**C**ONEXPO-CON/AGG will return to the Las Vegas Convention Center from March 3 to 7, 2026, introducing new features and innovations to the triennial event, which is the largest construction trade show in North America. The 2023 show set an attendee record with more than 139,000 from 133 countries. Over 2,400 exhibitors participated, spread across 3 million square feet of exhibit space.

***"We are especially excited to create new experiences and features for both attendees and exhibitors."***

*-Dana Wuesthoff,  
CONEXPO-CON/AGG Show Director*

"The continued growth and success of CONEXPO-CON/AGG has set a new benchmark for the industry," said CONEXPO-CON/AGG Show Director Dana Wuesthoff. "Building on this momentum, we will deliver an even more impactful event in 2026, continuing to provide unparalleled opportunities for networking,

education and highlighting the latest innovations in the construction industry. We are especially excited to create new experiences and features for both attendees and exhibitors."

## New in 2026

**Ground Breakers stage:** The keynote stage will highlight the global contributions of the construction industry and bring focus to critical industry topics.

Key topics include:

- Innovation in construction technology and practices
- Public policy impacting the industry
- Workforce development and addressing labor challenges
- Sustainability and environmental responsibility
- Mental health and well-being in the construction sector

**EmpowerHER workshop:** During Women in Construction Week 2026, the EmpowerHER workshop will be a special



North America's largest construction trade show, CONEXPO-CON/AGG, will return to the Las Vegas Convention Center March 3-7, 2026.





2,000 exhibitors are expected at CONEXPO-CON/AGG 2026, including Komatsu.

event dedicated to addressing the unique challenges and opportunities women face in the construction industry.

This program includes:

- Networking events fostering connections and community among women in the construction industry
- Peer-led panel discussions and keynote presentations featuring industry leaders and experts
- Sponsorship opportunities to support and promote women-focused initiatives

**Small Business workshop:** This recognizes the vital role of small businesses in the construction sector, addressing the unique challenges faced by small business owners.

It will provide:

- Networking events to build valuable connections for small businesses
- Best practices and practical tools that can be implemented immediately
- Sponsorship opportunities to support small business success

**Shop Talks and Walks workshop:** This maintenance-focused program is designed to provide attendees with practical solutions for everyday challenges.

This program will feature:

- Special events focused on preventive maintenance, equipment efficiency and increasing uptime
- Educational opportunities focused on providing attendees with the tools to solve real-world challenges

### Visit Komatsu

Komatsu is expected to have a large booth in the West Hall (W41945) and welcomes all to take an up-close look at its latest products, designed to help improve your operation. Meet with Komatsu experts to learn more about the equipment, Smart Construction solutions and services offered. ■

### CONEXPO-CON/AGG in focus

Held every three years, CONEXPO-CON/AGG showcases the latest equipment, products, services, and technologies for the construction industry, along with industry-leading education. For more information, visit <https://www.conexpoconagg.com>.

**When:** March 3-7, 2026

**Where:** Las Vegas Convention Center

**Expected exhibit space:** 2.9 million square feet

**Expected exhibitors:** 2,000

**Education sessions:** 150



# Debuts for WIRTGEN GROUP

**W 210 XF cold milling machine featured as new equipment and innovative technology are showcased during World of Asphalt and AGG1**

**W**IRTGEN introduced its W 210 XF during the World of Asphalt Show & Conference and AGG1 Aggregates Academy & Expo, adding it to its portfolio of large milling machines. The new model combines high performance and efficiency with compact dimensions.

Offering milling widths between 6 feet, 7 inches and 8 feet, 2 inches and a maximum milling depth of 13 inches, the approximately 65,000-pound W 210 XF is ideal for tasks ranging from surface layer rehabilitation and complete pavement removal to fine milling work with maximum efficiency in a wide range of project scenarios. The main areas in which the mill is deployed are where high milling performance and relatively compact dimensions are required, including freeways, state highways and airports. The innovative MILL ASSIST machine control system assures sustainable and efficient machine operations with high productivity.

"The W 210 XF can be utilized on a variety of projects, including bigger highway jobs, but it's nimble enough that you can put it on a residential city street as well as parking lots," said Tom Chastain, Milling Product Manager, WIRTGEN. "One of the standout features of the W 210 XF is a new 18-liter, 777-horsepower engine that requires no DEF. It has more horsepower with lower fuel consumption and CO2 emissions compared to the previous F-series model."

The WIRTGEN GROUP Performance Tracker Milling is available for the automated documentation of milling tasks. The operator can view the automated construction site

documentation and display the CO2 emissions for the entire construction site at a glance and in real time on the machine's control panel.

"Performance Tracker gives us all the job data; with lasers and GPS, it's taking more than 60 inputs a second," noted Chastain. "At the end of the day, we push one button and get a report showing fuel consumption, water, cutting tool consumption, square yards, cubic yards, how many tons were put in individual trucks, idle time and more."

Chastain added, "At World of Asphalt, we showed the W 210 XF with a new North American-style canopy that can be rolled back in and folded down below the hood level. It's good for transport or working in areas where there may be overhanging trees."

## Smart Compact launch

WIRTGEN launched its Smart Compact Basic and Smart Compact Pro for HAMM rollers during World of Asphalt. Smart Compact Basic uses sensors to measure asphalt surface temperature and an accelerometer on the front drum to measure stiffness. A weather station on the top of the roller measures air temperature and wind speed.

"With all the sensor values, we're able to calculate what the asphalt temperature cool down rate will be," stated Dan Sant Anselmo, HAMM Applications Support Manager, WIRTGEN. "This is incorporated into a screen on top of the platform for the operator, where they can select course thickness of the surface mix, binder or base. Within the parameters, the machine will vibrate depending on sensor feedback."

Sant Anselmo continued, "We take this one step further with Smart Compact Pro. With that, we have incorporated a sensor that is a real-time density scanner. This is the first time where you're actually able to scan the material and see what the true density of the material is. Along with that, we calibrate the sensor to the mix using a PQI or Troxler gauge. Once calibrated, you can go to work. If we set a point of 95% density, the machine will continue to use dynamic compaction until it hits that, then shuts the vibration off. So, we don't have fears of over-compacting or under-compacting, and we have hopefully eliminated the need for coring in the future."

With the HD+ 120i VIO-2 HF, the WIRTGEN GROUP also showed a tandem roller with three-point articulation steering designed



VÖGELE's MINI 500 is its smallest paver. With widths ranging from 10 inches to 5 feet, 11 inches, it is ideal for small-scale paving on limited-space sites.





WIRTGEN's new W 210 XF cold milling machine combines high performance and efficiency with compact dimensions.

especially for use in North America. It is fitted with two maintenance-free VIO drums offering a choice of working with static compaction, vibration or oscillation. Also appearing at the show was the HX 70i tandem roller, the HP 100i pneumatic tire roller for chipseal applications, and the HD 12e VV with a fully electric drive system that enables emission-free compaction and particularly low operating noise.

For the asphalt paving sector, VÖGELE highlighted technology that includes its ability to do 3D paving using models from a variety of companies, including Topcon, Trimble and Leica. Laikram "Nars" Narsingh, Application and Technology Specialist with the WIRTGEN GROUP, showed how that's possible in a plug-and-play atmosphere with VÖGELE pavers.

"We have an interface on the backside of the paver that allows you to use any of those systems while using VÖGELE's machine controls, which simplifies installation and makes it more reliable and economical," explained Narsingh.

VÖGELE presented the SUPER 1703-3i wheeled universal-class paver, the SUPER 2000-3i highway-class tracked paver and a mini-class SUPER 700i. A highlight of the show was the smallest VÖGELE paver, the MINI 500, with a base width of only 2 feet, 11 inches and working widths from 10 inches to 5 feet, 11 inches. It is the ideal choice for paving between railroad or streetcar tracks, capping narrow trenches, or the construction of footpaths and cycleways.

### Impact introduction

A highlight for the asphalt recycling sector included a close look at the new KLEEMANN MOBIREX MR 100i NEO mobile impact crusher. It is the only machine in its performance class to offer fully automatic crusher gap adjustment and zero-point determination.



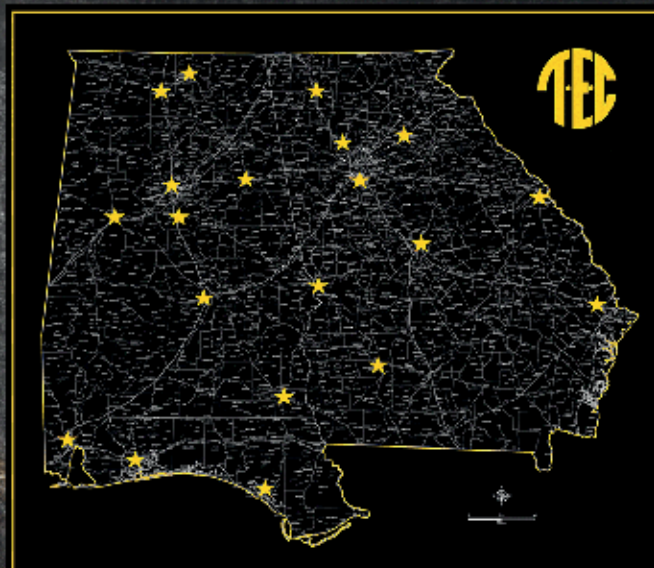
HAMM's HD+ 120i VIO-2 HF offers versatility with two VIO drums that enable a total of nine different compaction mode combinations.

"At 78,000 pounds, it's the smallest impact crusher that KLEEMANN has built to date, but it's a really good machine for our customers to get out there and be transportable and versatile," elaborated Cole Childress, Technical Sales Manager, WIRTGEN GROUP. "As we developed it, we took a lot of the benefits and features from our larger machines such as the continuous feed system, SPECTIVE CONNECT, overload protection and more. It's also the first crusher we have with an onboard power pack. There are several optional features available such as a wind sifter too."

The innovative "Lock and Turn Quick Access" safety system allows users to open the crusher without tools in only 30 seconds. Operation of the KLEEMANN crusher directly from the SPECTIVE SWITCH control unit is particularly easy and intuitive. With SPECTIVE CONNECT, operators can access all relevant data such as engine speeds, consumption values and filling levels via a clearly laid-out display on a smartphone or tablet. ■



**3 STATES**  
**20 LOCATIONS**  
**29 PSSRs**



## **ALABAMA**

### **ALABASTER**

DALTON CAMPBELL (205) 586-7336

### **ANNISTON**

ADAM FEAZELL (256) 343-4261

### **BIRMINGHAM**

ALAN COOPER (205) 965-4131

JOHN BARBEE (205) 363-0870

### **DECATUR**

RICKY MATHIS (256) 338-4574

### **DOTHAN**

ANDREW LARSEN (334) 350-4392

### **MOBILE**

RYNE PHELPS (205) 757-6910

### **MONTGOMERY**

TOULOUSE JOHNSON (334) 306-9541

TRIPP ADAMS (334) 850-8249

### **HUNTSVILLE**

GARY DODD (256) 677-3877

### **TUSCALOOSA**

KENT WATKINS (205) 361-0083

## **FLORIDA**

### **PANAMA CITY**

JOEY MAJORS (850) 527-1840

### **PENSACOLA**

MIKE DOUGLAS (850) 554-3234

## **GEORGIA**

### **ALBANY**

DOUG HAAS (229) 349-3383

HANK DUNN (229) 894-6139

### **AUGUSTA**

JACOB PACKARD (251) 327-4717

### **CALHOUN**

EDWIN MURRAY (770) 608-6525

ANDY WORLEY (770) 548-5342

### **COLUMBUS**

GEORGE COPELAN (706) 577-4163

### **FOREST PARK**

NICHOLAS WINKLER (423) 664-3013

CODY SMITH (205) 454-0458

ZACHARY BRISCOE (770) 519-9616

### **HOSCHTON**

JESUS MUNIZ (678) 725-2113

CARTER WOOD (678) 733-2981

### **KENNESAW**

JACOB ALTMAN (678) 237-1520

### **MACON**

BRIAN WEBB (205) 844-7646

MARK CATHEY (770) 584-7277

### **SAVANNAH**

SETH BURNHAM (205) 354-7236

CODY REEVES (478) 957-0936



**PRODUCT SUPPORT TEAM**





# Engineered for those who get it done

Next-generation Komatsu PC220LC-12 and PC220LCi-12 deliver greater comfort, performance and smart technology for today's hard-working operators

**K**omatsu's new PC220LC-12 and PC220LCi-12 excavators are built for contractors who want more than just power. Delivering the most comfortable and advanced excavator work environment Komatsu has ever created, the PC220LC-12 and PC220LCi-12 are operator-first machines that blend performance, comfort and smart technology to help boost productivity, shift after shift.

From the ground up, these 21- to 24-ton-class excavators have been reimagined and engineered around a simple premise — empower operators and you'll power productivity on your jobsite. The cab offers 28% more space, 30% more legroom, improved visibility, reduced noise and vibration, and a high-quality heated air-suspension seat. The new 8-inch HD monitor puts machine data, controls and customization options at an operator's fingertips.

Performance gains back up the comfort. A new electronically controlled hydraulic system and high-output engine help deliver an up to 8% increase in digging force, up to 7% more lift capacity and up to 20% cost reduction in fuel than the previous Komatsu PC210LC-11 model. The new P plus mode boosts workload productivity by up to 18%.

## Advanced tech and safety

While the PC220LC-12 has some integrated baseline smart technology, such as 2D machine control, contractors looking for next-level capabilities can step up to the Komatsu PC220LCi-12, which adds intelligent machine control (IMC) 3.0, Komatsu's latest smart technology.

Automated features on the PC220LCi-12, such as auto grade assist, auto stop control, bucket angle hold, compaction control, minimum distance control, auto swing and payload monitoring, help reduce operator workload while improving accuracy and boosting productivity. 3D boundary control is the first OEM factory-integrated feature of its kind in the construction industry. It's a unique technology that helps operators work efficiently across the entire jobsite by remembering multiple restriction zones specific to each work area. Auto-swing with travel stop functionality is also an industry first for excavators.

To promote zero harm, these excavators have features like rollover avoidance, KomVision 360-degree camera coverage, object detection, automatic deceleration controls, seat belt reminders and more. Maintenance is simplified with ground-level service points and extended replacement intervals, helping reduce maintenance costs by up to 20%.

By empowering operators with enhanced comfort, cutting-edge technology and customizable features, the Komatsu PC220LC-12 and PC220LCi-12 excavators represent the next step forward for contractors seeking to maximize productivity and reduce total cost of ownership. ■

*\*All percentage claims are based on a comparison to the previous PC210LC-11 model. Reductions in maintenance costs are due to longer replacement intervals for hydraulic oil and oil filters and longer cleaning intervals for the particulate filter.*

## Equipment snapshot

**Models:** PC220LC-12 and PC220LCi-12

**Operating Weight:** 53,352-54,675 lbs.

**Horsepower:** 5% increase

**Digging Force:** Up to 8% increase

**Lifting Capacity:** Up to 7% increase

**Fuel:** Up to 20% cost reduction

**Cab Space:** 28% larger and 30% more legroom

**Visibility:** 50% increase

**Maintenance:** Up to 20% lower costs

**Technology:** 2D machine control standard and IMC 3.0 on the PC220LCi-12



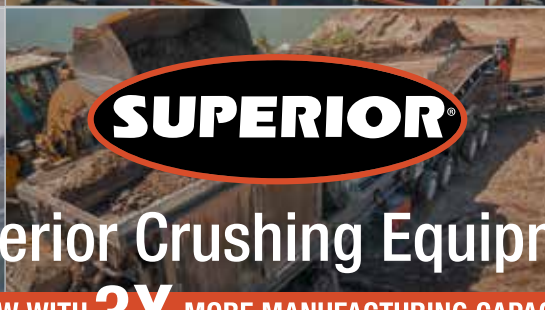
Komatsu's new PC220LC-12 excavator and PC220LCi intelligent machine control (IMC) 3.0 excavator are ideal for residential and commercial contractors.





# EVERY CRUSHER YOU NEED

## More Models Than You Might Imagine



**SUPERIOR®**

Superior Crushing Equipment

NOW WITH **3X** MORE MANUFACTURING CAPACITY

*TEC is Superior's crushing, screening, washing and conveying dealer in Alabama and Georgia.*





# Komatsu introduces WA475-11 and WA485-11

These new wheel loaders are built for increased productivity, operator comfort and ease of maintenance

**K**omatsu's new versatile WA475-11 and WA485-11 wheel loader models are designed to move material efficiently and effectively, helping to increase productivity while providing improved operator comfort and easy maintenance. Sharp focus has been put on reducing total cost of ownership (TCO).

***"In designing the WA475-11 and WA485-11, we focused on what truly matters to our customers based on years of direct customer feedback — efficiency, power, safety and operator comfort."***

*-Bruce Boebel,  
Director of Products and Service,  
Komatsu*

The WA485-11 offers up to 12% lower fuel consumption, 21% more engine power and 13% faster climbing speed than its predecessor, the WA480-8. The WA475-11 provides up to 7% lower fuel consumption, 18% higher engine power and 40% greater climbing speed than the WA475-10.

Both loaders now include Komatsu Hydraulic Mechanical Transmission (KHMT) engineered

for improved fuel efficiency and productivity. Operators will appreciate the large, comfortable four-pillar cab, angle feedback joystick steering and independent work control to help reduce fatigue on long operating days. The new wheel loaders also feature standard rear object detection and a deluxe LED light package to promote enhanced jobsite safety.

"In designing the WA475-11 and WA485-11, we focused on what truly matters to our customers based on years of direct customer feedback — efficiency, power, safety and operator comfort. These wheel loaders build on proven performance of previous models with innovative advancements designed to enhance productivity," said Bruce Boebel, Director of Products and Service, Komatsu. "We're excited to introduce these machines and put them to use for our aggregate customers and beyond."

Both models offer yard loader configurations that include additional stability features such as a larger bucket, wide low-profile tires and additional counterweight designed to support higher productivity in aggregate applications. ■



Quick specs

Model	Horsepower	Operating weight	Bucket capacity
WA475-11	343 HP	54,542-60,197 lbs.	5.5-6.3 yd <sup>3</sup>
WA485-11	362 HP	61,432-64,997 lbs.	6.4-7.2 yd <sup>3</sup>

Komatsu's new WA485-11 offers a range of new productivity and efficiency features.



# Purpose-built forestry machine

New TimberPro TN230D log loader engineered for enhanced productivity and operator needs

**B**ased on customer feedback, Komatsu has introduced its new TimberPro TN230D log loader that was built from the ground up and carefully engineered to help drive productivity and provide additional operator benefits.

The 197-horsepower TN230D offers a 36-foot reach and 58,224 foot-pounds of swing torque. It also features Power Max, which temporarily increases engine horsepower and hydraulic flow to support tough forestry tasks.

The TimberPro TN230D is built with proven, high-quality Komatsu components. Its hydraulic system, powertrain, control valve and interior components are designed and manufactured in-house to help confirm performance and quality control.

The TN230D is the first machine in its class segment to feature dual service platforms with electrically actuated platforms on the left

and right sides, offering enhanced access for service and cleaning.

### Numerous benefits

New benefits include easy access via a large, rear-entry cab with service walkways and safety railings, premium heated and cooled seats with adjustable armrests, an elevated cabin with large windows and a front-view camera to enhance visibility, LED lights, and a large overhead skylight.

“We know how demanding forestry environments are—the tough work requires equipment capable of standing up to the job,” said Kyle Kovach, Product Planning Manager. “When we set out to develop a new log loader, we gathered feedback on customer needs then unleashed a team of talented engineers to design this product from the ground up. The result merges quality components with the latest technology to offer a range of productivity, safety and comfort benefits.” ■

### Quick specs

Model	Horsepower	Reach	Swing torque
TimberPro TN230D	197 HP	36 feet	58,224 foot-pounds





**WEIR** **ESCO**

# BRINGING QUALITY, INNOVATION & SUPPORT TOGETHER



XDP Bucket



HDP Bucket



ESCO®  
Attachments

## ESCO AND TRACTOR & EQUIPMENT CO. An Unbeatable Combination of Performance and Service



Ultralok®  
Tooth  
System



Since  
1943

TEC1943.com

**ALABAMA**  
ALABASTER  
ANNISTON  
BIRMINGHAM  
DECATUR  
DOTHAN  
HUNTSVILLE  
MOBILE  
MONTGOMERY  
TUSCALOOSA

**GEORGIA**  
ALBANY  
AUGUSTA  
CALHOUN  
COLUMBUS  
FOREST PARK  
HOSCHTON  
KENNESAW  
MACON  
SAVANNAH

**FLORIDA**  
PANAMA CITY  
PENSACOLA



# Interactive experience for customers

**Komatsu showcases new mining machines and Smart Quarry solutions at Quarry Days, offering a unique opportunity for attendees to operate the equipment**



Watch the video

**K**omatsu's Quarry Days 2025 brought a record-breaking number of attendees to the company's Arizona Proving Grounds near Tucson. The annual event highlighted a diverse range of Komatsu's heavy equipment and introduced new products tailored specifically for quarry and mining operations.

Bruce Boebel, Komatsu's Director of Product and Services, expressed enthusiasm about the successful event.

"We've had a great turnout this year — in fact, it's a record turnout," Boebel declared. "Customers from many different areas in North America attended, so it's a very diverse group. We saw great interaction this week."

Quarry Days primarily showcased Komatsu's mining support gear, including significant offerings like large excavators and dozers. Throughout the week, attendees had the opportunity to explore and test over 20 products and solutions, guided by Komatsu's team of experts.

Highlights included live demonstrations of Komatsu's latest releases, the HD605-10 and WA700-8, and an exclusive preview of the upcoming WA475-11 and WA485-11

wheel loaders. These new machines reflect Komatsu's commitment to delivering solutions that help operators boost productivity and efficiency at quarry sites.

For instance, the new WA485-11YL is available in a yard loader (YL) configuration. The new WA485-11YL adds unique features to the standard base model, specifically designed for demanding quarry and aggregate applications. It is equipped with a large-capacity bucket and counterweight. This makes this purpose-built wheel loader a great choice for handling, stockpiling and loading processed material onto commercial trucks with three passes.

---

***"Customers get to interact directly with product managers, discuss specific challenges and solutions, and see firsthand why Komatsu equipment stands apart."***

*-Bruce Boebel,  
Director of Product and Services,  
Komatsu*

---

"We're highlighting the new WA700-8 wheel loader, which is a four-pass match for our new 70-ton HD605-10 rigid haul truck," Boebel noted. "We're also debuting our WA475-11 and WA485-11 loaders that feature an all-new engine and steering system, along with other enhancements."

Komatsu further demonstrated its commitment to innovation through its Smart Quarry and My Komatsu solutions. These digital solutions, applicable to Komatsu and competitor equipment alike, provide actionable insights to help optimize quarry operations.

"Our Smart Quarry Site system lets you monitor machine interactions, fuel efficiency, and identify operational bottlenecks," explained Boebel. "It's a great resource that can be integrated across a mixed fleet to help enhance site optimization."

## Hands-on opportunities

During Quarry Days, attendees had the opportunity to operate the showcased equipment with the guidance and supervision of experienced Komatsu trainers and employees.



Vulcan Materials Company's Wade Thornton, Tilcon New York Inc.'s Billy Paul, CRH's Andrew Pylypyshyn, Tilcon New York Inc.'s Austin Goodis, CRH's Matt Schumann, Komatsu's Thomas Bychowski and Rebecca O'Donnell, Tilcon New York Inc.'s John Selman, CRH's Mark Pillsbury, and Mid-South Aggregates' Dale Long check out a Komatsu wheel loader on display.





## ► VIDEO

Komatsu showcases a range of equipment at Quarry Days.

"Some other OEMs don't allow customers on-site to operate equipment; that's one unique aspect Komatsu prides itself on," stated Boebel. "Customers can safely operate machines with headsets and trainers in the vehicles, providing an interactive, valuable experience."

Beyond showcasing equipment, Quarry Days provided critical networking opportunities between customers and Komatsu experts.

---

***"It's been a great, safe event with exceptional feedback."***

*-Bruce Boebel,  
Director of Product and Services,  
Komatsu*

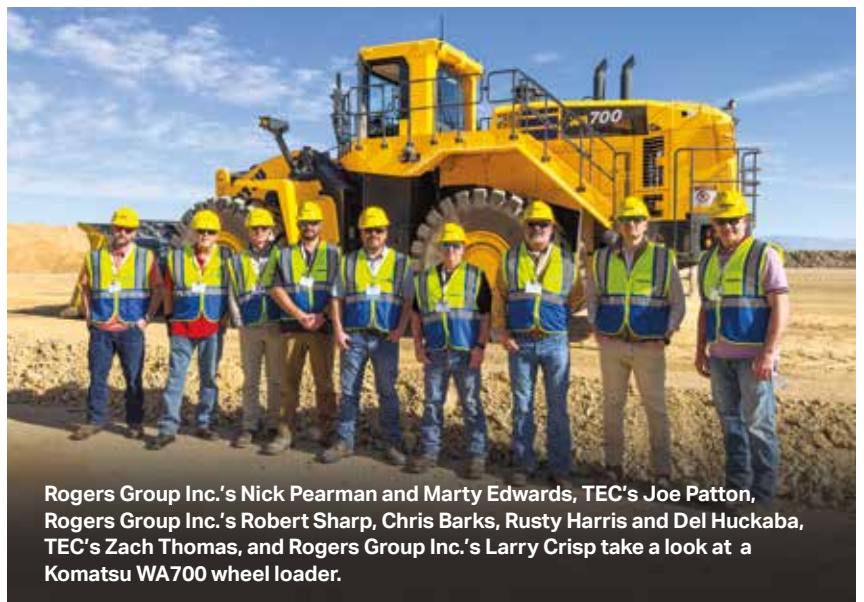
---

"Customers get to interact directly with product managers, discuss specific challenges and solutions, and see firsthand why Komatsu equipment stands apart," Boebel remarked. "These conversations help customers determine the ideal equipment combinations for their unique quarry operations."

## Next time

Interested customers can participate in future Quarry Days by coordinating with their local Komatsu distributor.

"We hold Quarry Days regularly, and we encourage customers to contact their



Rogers Group Inc.'s Nick Pearman and Marty Edwards, TEC's Joe Patton, Rogers Group Inc.'s Robert Sharp, Chris Barks, Rusty Harris and Del Huckaba, TEC's Zach Thomas, and Rogers Group Inc.'s Larry Crisp take a look at a Komatsu WA700 wheel loader.

distributor about participating," Boebel advised. "We tailor the experience based on customer interest, ensuring they get maximum value from the event."

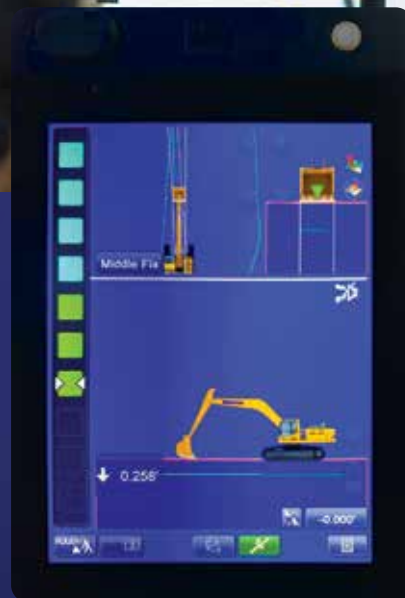
Reflecting on the success of this year's event, Boebel warmly thanked attendees for their participation.

"It's been a great, safe event with exceptional feedback," Boebel concluded. "We welcome all customers to join us again next time." ■





# Technology to help you work smarter



Maximize productivity on your jobsites with advanced automation technology. **Komatsu's intelligent machine control (IMC)** can help you get the most from your machines, crew and carefully designed plans.

- Get new operators up to speed quickly
- Go from mass excavating to finished grading faster than ever
- Help eliminate potential damage to design surface
- Empower operators to work efficiently, pass after pass

Discover more ► [komatsu.com/imc](https://komatsu.com/imc)

**KOMATSU**



# Make the most of your telematics data

## My Komatsu gives you an easy way to collect, view and monitor machine information from Komatsu and non-Komatsu equipment

**T**elematics data can help drive results for business operations, but only when it's collected and analyzed efficiently.

My Komatsu, Komatsu's comprehensive digital hub, analyzes telematics data from your on-machine technology — including Komtrax, Komtrax Plus and ISO API 15143-3 (AEMP 2.0) data from other OEMs — and displays it on easy-to-read dashboards. With My Komatsu, you can access data that's generated by Komatsu and non-Komatsu equipment anytime, from anywhere.

***"It's a huge benefit in time and cost savings that you can monitor an entire fleet on a single platform, regardless of OEM."***

*-Tommy Hergenreder,  
North American Manager,  
Digital Product,  
Komatsu*

My Komatsu minimizes your logins and helps you see your data all in one place. ISO integration and analytics are included as standard features with your registration. ISO API 15143-3 (AEMP 2.0) computer code allows fleet managers to integrate new digital telematics data into existing fleet management systems, letting you see your complete fleet, pull operation reports and set alerts.

"It's a huge benefit in time and cost savings that you can monitor an entire fleet on a single platform, regardless of OEM," said Tommy Hergenreder, North American Manager, Digital Product, Komatsu. "Another is that Komatsu doesn't charge for connecting other APIs, which some OEMs do. Currently, there is a long list of other manufacturers that you can get API credentials for, and it's growing all the time."

Komtrax data flows to Komtrax storage, while ISO 15143-3 (AEMP 2.0) facilitates the extraction

and raw data to your choice of database. My Komatsu connects telematics data from all machines or accesses it through monitoring and analysis services to create powerful analytics dashboard views.

### Benefit your bottom line

With My Komatsu, you can:

- Get actionable information to monitor machines and help guide decisions
- Quickly view and manage data on one dashboard
- Receive maintenance alerts and order parts
- Troubleshoot to minimize downtime
- Monitor for theft and unauthorized use
- Benchmark machine performance
- Track fuel consumption and manage fuel efficiency

Available data points with My Komatsu vary by OEM and machine applications, but they generally include last known location, engine status, cumulative operating hours and more.

"One API credential from the OEM covers all of that manufacturer's machines that you may have and want to input into your My Fleet page on My Komatsu," said Andrew Casey, Digital Solutions Analyst, Komatsu. "This is a very cost-effective, convenient solution to managing a mixed fleet without any additional cost to implement My Komatsu." ■



My Komatsu minimizes logins and displays your data all in one place.





TEC1943.com

#### ALABAMA

Alabaster	Huntsville
Anniston	Mobile
Birmingham	Montgomery
Decatur	Tuscaloosa
Dothan	

#### FLORIDA

Panama City Pensacola

**LeeBoy**

Learn more at [www.LeeBoy.com](http://www.LeeBoy.com)



# Advanced formula with phosphates

**Komatsu Supercoolant helps provide better protection against corrosion and a longer life to reduce downtime and costs**

**Y**our equipment can face a range of temperature extremes. Without proper protection against high heat and extreme cold, corrosion could occur in the engine, which leads to performance issues. The new Komatsu Supercoolant delivers a formula designed to better protect components against the elements and premature failure.

Komatsu Supercoolant uses advanced POAT (phosphated organic acid technology) with corrosion inhibitors. The new formula has been certified for use in Cummins heavy-duty diesel engines and meets CES 14603 standards. This means it can be used in all Komatsu equipment and other all-makes equipment with Cummins engines.

---

***"The new Komatsu-specific formula adds phosphates that provide extra protection for components against corrosion. That protection helps ensure long life and that components don't prematurely wear."***

*- Tony Laskero,  
Senior Manager of Aftermarket,  
Komatsu*

---

"The new Komatsu-specific formula adds phosphates that provide extra protection for components against corrosion," explained Tony Laskero, Komatsu's Senior Manager of Aftermarket. "That protection helps ensure long life and that components don't prematurely wear."

In addition to better protection, the new Komatsu Supercoolant formula has a longer replacement interval — up to 12,000 hours with regular KOWA (Komatsu Oil and Wear Analysis) sampling and adding an extender additive after 6,000 hours.

"KOWA should be performed at every maintenance interval as it's similar to a 'blood test' that can identify issues that need to be addressed before they become catastrophic," Laskero said. "With this new Komatsu Supercoolant, at 6,000 hours, you should perform a KOWA, and if everything is in good working order, you can add the extender to prolong life. An additional KOWA should be performed at 9,000 hours. At 12,000 hours, it's time to flush the cooling system and add new Supercoolant."

When switching from the previous Komatsu Supercoolant formula, a cooling system flush is not needed. However, it should not be mixed with other coolant brands.

"If you are using a different brand of coolant currently, it is advised that you perform a coolant system flush before using Supercoolant for the first time," stated Laskero. "Once you have Komatsu Supercoolant in your machinery, you get extended interval replacement, which can help reduce downtime and maintenance costs. A bonus is you can use it in non-Komatsu equipment with Cummins engines."

Komatsu Supercoolant is available in 1-gallon jugs, 5-gallon pails, 55-gallon drums and 320-gallon totes through your Komatsu distributor and on My Komatsu. Consult your machine's operator and maintenance manual (OMM) or distributor representative for the proper fluid level. ■

*All comparisons are to the previous Komatsu version or model unless otherwise stated.*



**The new Komatsu Supercoolant formula uses advanced POAT (phosphated organic acid technology) with corrosion inhibitors.**



# Tax-advantaged machinery purchases

## Bonus depreciation returns to 100%

**T**he One Big Beautiful Bill Act (OBBBA) has restored 100% bonus depreciation for qualified property placed in service after Jan. 19, 2025, provided that it is acquired under a binding written contract executed on or after that date.<sup>1</sup>

This reinstated 100% bonus depreciation encourages businesses to invest in capital improvements by providing a full tax deduction in the first year the asset is placed in service. However, the eligibility depends on the execution date of the purchase agreement — contracts signed prior to Jan. 19, 2025, are only eligible for 40% bonus depreciation, even if the asset is placed in service later in the year.<sup>2</sup>

### Higher amounts for Section 179

One key advantage of bonus depreciation is that it has no cap on the amount that can

be deducted. Businesses can also combine bonus depreciation with Section 179 expensing, another powerful tax-saving tool, although Section 179 does include an annual limit. Section 179 may be particularly useful for smaller capital equipment purchases such as machinery or software. ■

*This article is intended for informational purposes only. For guidance specific to your business, consult a tax advisor.*

1. <https://kahnlitwin.com/blogs/tax-blog/big-beautiful-bill-act-restores-100-bonus-depreciation-what-businesses-need-to-know-for-2025>
2. <https://mavencostseg.com/100-bonus-depreciation-is-back-for-good/>





# PURPOSE-BUILT TO WASH AWAY DOWNTIME.

Get superior visibility with an elevating MaxCab equipped with bulletproof glass, 2-camera system, skylight, and catwalk, which are all standard. Build the cab that fits your needs from one of our cab configurations for max safety, loading accuracy and stability in your operation.

Consume 30% less energy while outlifting larger conventional machines with the SENNEBOGEN 870E, meaning you can lift more and pay less. From configuring the material handler to fit your needs to all the after-sales support to back it up, SENNEBOGEN material handlers don't just stand out because of their color.



+1 704-347-4910  
[sales@sennebogenllc.com](mailto:sales@sennebogenllc.com)  
[sennebogen-na.com](http://sennebogen-na.com)  
[sales@tec1943.com](mailto:sales@tec1943.com)  
[tec1943.com](http://tec1943.com)

**SENNEBOGEN** 





# THE EXTRA MILE NEVER ENDS



## WITH 20 CONVENIENT LOCATIONS, WE'VE GOTCHA COVERED!

**BIRMINGHAM, AL**  
(205) 591-2131

**MONTGOMERY, AL**  
(334) 288-6580  
(800) 832-9563

**TUSCALOOSA, AL**  
(205) 752-0621  
(800) 582-4625

**ALABASTER, AL**  
(205) 621-2489

**ANNISTON, AL**  
(256) 831-2440

**MOBILE, AL**  
(251) 457-8991  
(800) 233-7213

**DOTHAN, AL**  
(334) 678-1832

**DECATUR, AL**  
(256) 355-0305

**HUNTSVILLE, AL**  
(256) 851-2222

**FOREST PARK, GA**  
(404) 366-0693  
(800) 488-0693

**HOSCHTON, GA**  
(706) 654-9850  
(888) 334-9850

**KENNESAW, GA**  
(678) 354-5533

**CALHOUN, GA**  
(706) 879-6200  
(800) 827-3072

**MACON, GA**  
(478) 745-6891  
(800) 786-3120

**SAVANNAH, GA**  
(912) 330-7500  
(800) 827-1405

**COLUMBUS, GA**  
(706) 562-1801

**AUGUSTA, GA**  
(706) 798-7777  
(800) 659-3090

**ALBANY, GA**  
(229) 435-0982  
(800) 733-0982

**PANAMA CITY, FL**  
(850) 763-4654  
(800) 342-2055

**PENSACOLA, FL**  
(850) 505-0550